

1 DF-2C
ELEV. 'A' REV.

RIGHT SIDE ELEVATION

1 DF-2C
ELEV. 'A' REV.

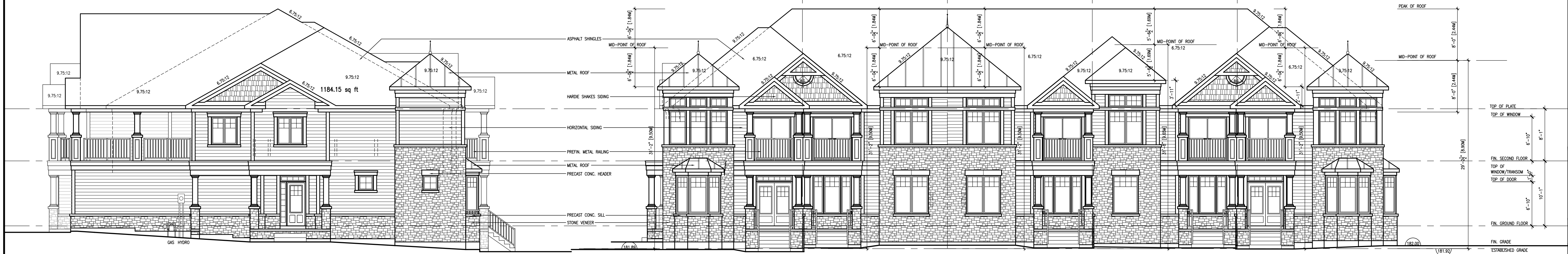
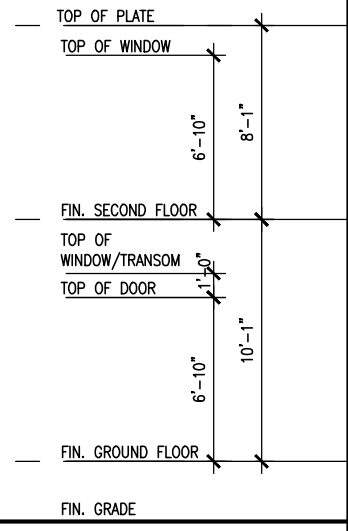
REAR ELEVATION

2 DF-1
ELEV. 'A3' REV.

3 DF-1
ELEV. 'A2' REV.

4 DF-1
ELEV. 'A1'

5 DF-2 END
ELEV. 'A'



5 DF-2 END
ELEV. 'A'

FRONT ELEVATION

5 DF-2 END
ELEV. 'A'

4 DF-1
ELEV. 'A1'

3 DF-1
ELEV. 'A2' REV.

2 DF-1
ELEV. 'A3' REV.

1 DF-2C
ELEV. 'A' REV.

1	ISSUED FOR 2ND SPA	24-05-07	WAS
2	ISSUED FOR SPA	24-02-20	WAS
3	DATE		

VAD DESIGN
255 Consumers Rd
Suite 120
Toronto ON M2J 1R4
t 416.630.2255
f 416.630.4782
vadesign.com

Richard Vuk 24488
Architect
Richard Vuk
Architect
Richard Vuk
Architect

HAMOUNT INVESTMENTS

project name: _____
location: WASAGA, ONTARIO
DUAL FRONTING TOWNHOUSES

project no: 16041
BUILDING 1

DATE: DECEMBER 2023
SCALE: 1/8" = 1'-0"

BLOCK ELEVATIONS
B.1.2

BUILDING 1



6 DF-2 END
ELEV. 'B' REV.

RIGHT SIDE ELEVATION



6 DF-2 END
ELEV. 'B' REV.

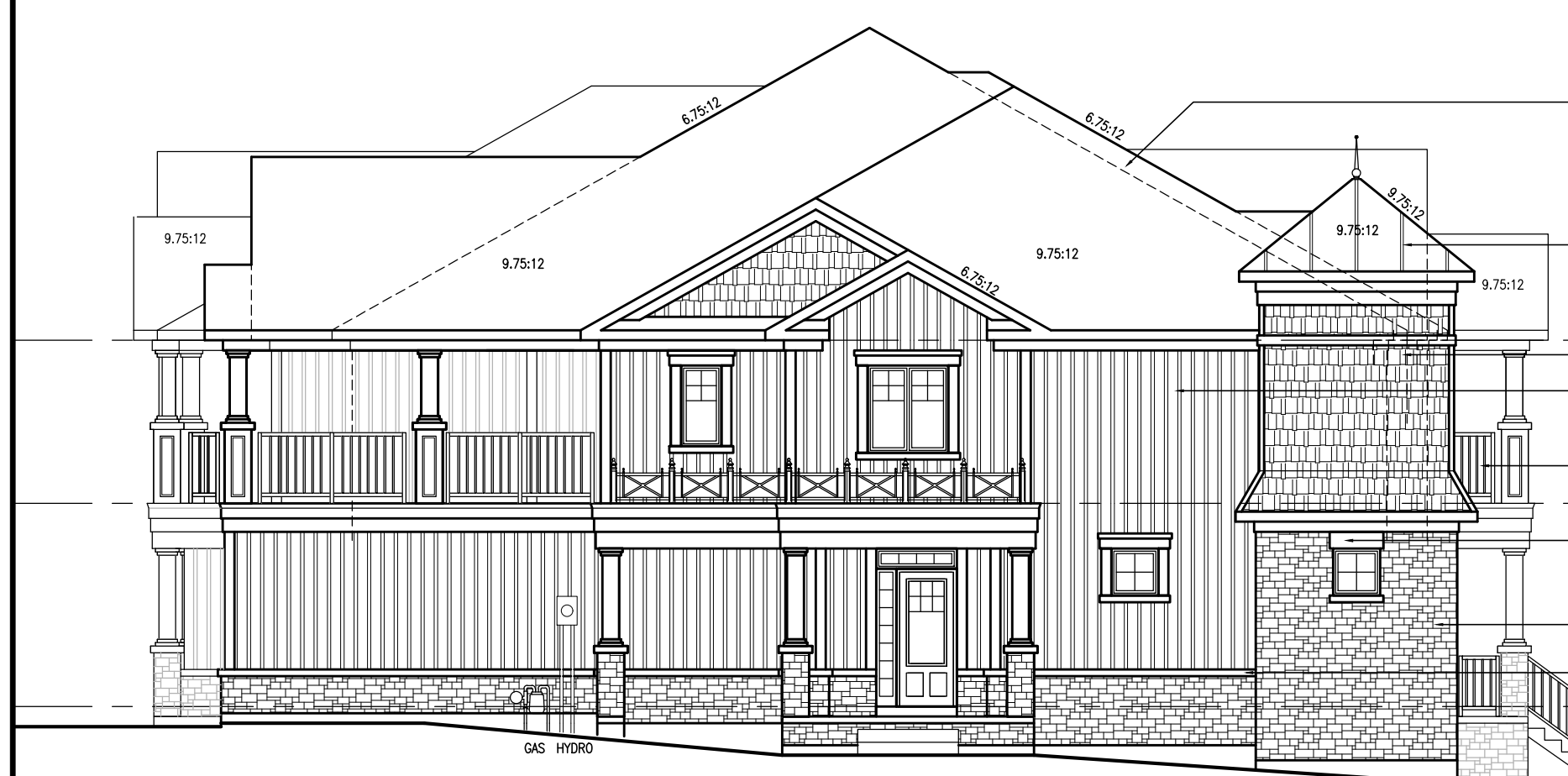
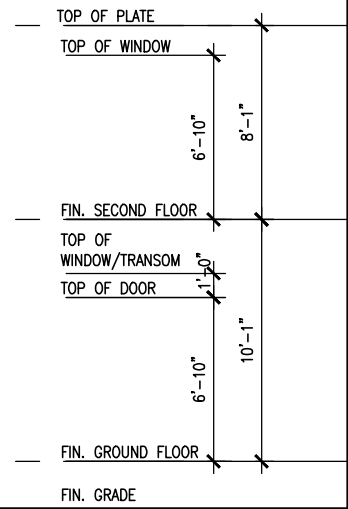
7 DF-1
ELEV. 'B2' REV.

8 DF-1
ELEV. 'B1'

9 DF-1
ELEV. 'B1' MOD REV.

10 DF-2 END
ELEV. 'B'

REAR ELEVATION



10 DF-2 END
ELEV. 'B'

LEFT SIDE ELEVATION



10 DF-2 END
ELEV. 'B'

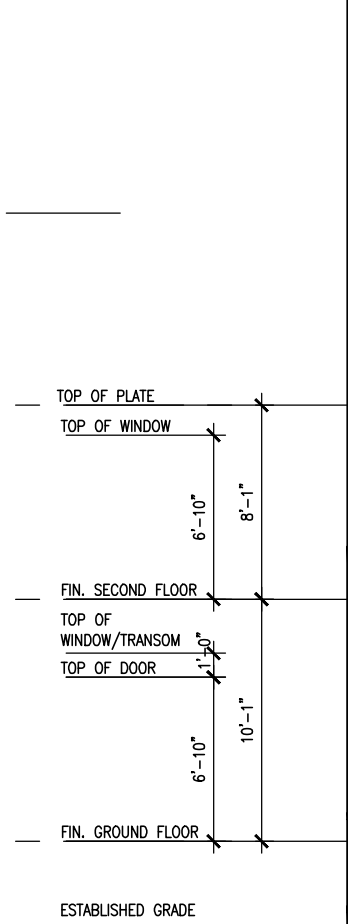
9 DF-1
ELEV. 'B1' MOD REV.

8 DF-1
ELEV. 'B1'

7 DF-1
ELEV. 'B2' REV.

6 DF-2 END
ELEV. 'B' REV.

FRONT ELEVATION



10	ISSUED FOR 2ND SPA	24-05-07	WAS
9	ISSUED FOR SPA	24-02-20	WAS
8	ISSUED FOR SPA	24-02-20	WAS
7	ISSUED FOR SPA	24-02-20	WAS
6	ISSUED FOR SPA	24-02-20	WAS
5	ISSUED FOR SPA	24-02-20	WAS
4	ISSUED FOR SPA	24-02-20	WAS
3	ISSUED FOR SPA	24-02-20	WAS
2	ISSUED FOR SPA	24-02-20	WAS
1	ISSUED FOR SPA	24-02-20	WAS

Contractor must verify all dimensions on the job and report any discrepancy to the Designer before proceeding with the work. All drawings and specifications are instruments of service and the property of the architect which must be returned at the completion of the work. Drawings are not to be scaled.

VAD DESIGN
 255 Consumers Rd
 Suite 120
 Toronto ON M2J 1R4
 T 416.630.2255
 F 416.630.4782
 vadesign.com

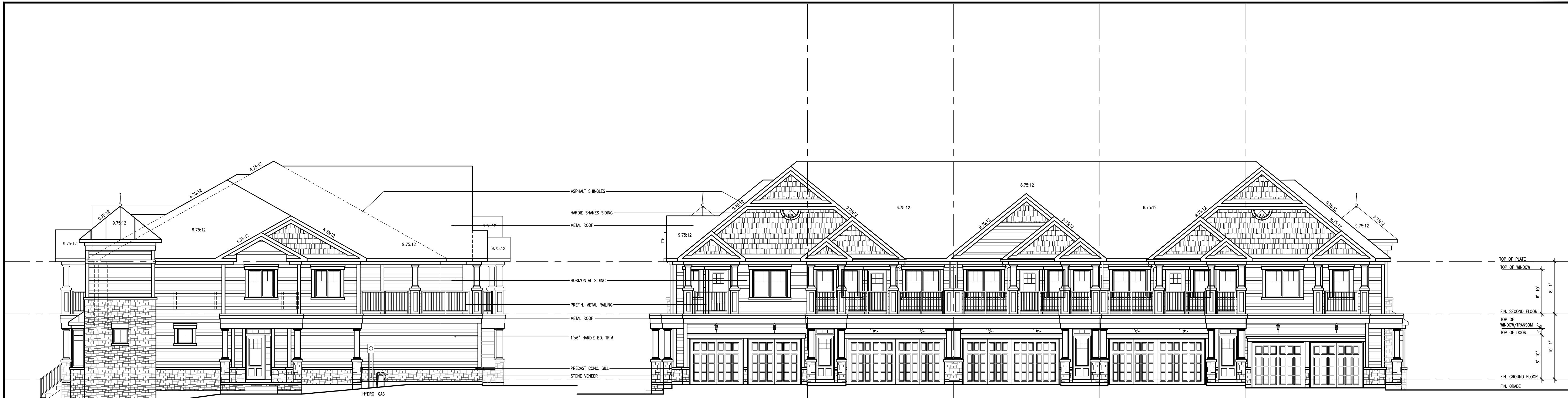
Richard Vuk
 24488
 43658

HAMOUNT INVESTMENTS

project name	project no.
WASAGA, ONTARIO	16041
DUAL FRONTING TOWNHOUSES	BUILDING 2
BLOCK ELEVATIONS	B2.2

DATE: DECEMBER 2023
 SCALE: 1/8" = 1'-0"
 DRAWN BY: S. BATTANI
 CHECKED BY: S. BATTANI

BUILDING 2



11 DF-2 END
ELEV. 'A' REV.

RIGHT SIDE ELEVATION

11 DF-2 END
ELEV. 'A' REV.

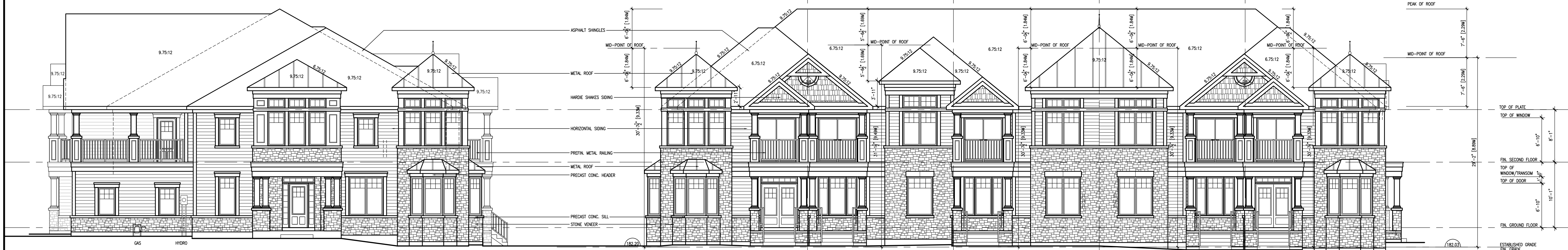
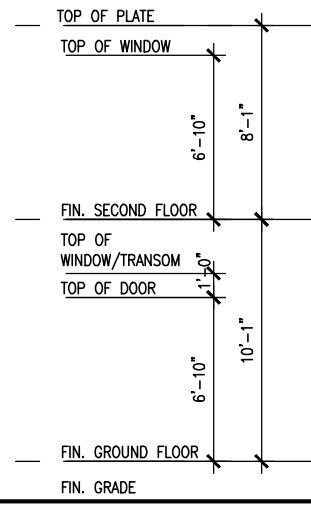
REAR ELEVATION

12 DF-1
ELEV. 'A1' REV.

13 DF-1
ELEV. 'A2'

14 DF-1
ELEV. 'A3'

15 DF-2C
ELEV. 'A'



15 DF-2C
ELEV. 'A'

LEFT SIDE ELEVATION

15 DF-2C
ELEV. 'A'

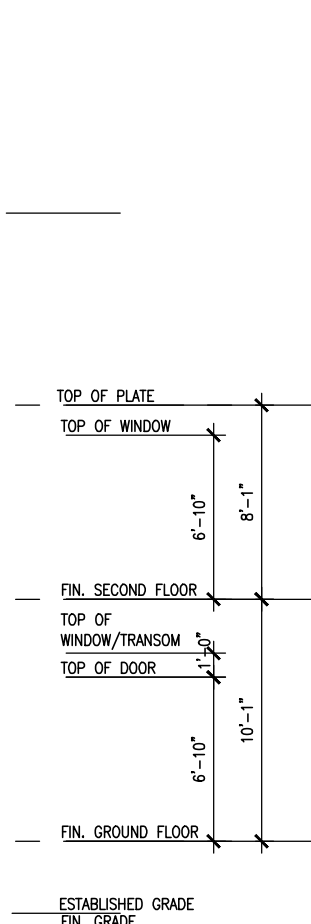
FRONT ELEVATION

14 DF-1
ELEV. 'A3'

13 DF-1
ELEV. 'A2'

12 DF-1
ELEV. 'A1' REV.

11 DF-2 END
ELEV. 'A' REV.



1	ISSUED FOR SPA	24-05-07	WAS
2	ISSUED FOR SPA	24-02-20	WAS
3	ISSUED FOR SPA	24-02-20	WAS
4	ISSUED FOR SPA	24-02-20	WAS
5	ISSUED FOR SPA	24-02-20	WAS
6	ISSUED FOR SPA	24-02-20	WAS
7	ISSUED FOR SPA	24-02-20	WAS
8	ISSUED FOR SPA	24-02-20	WAS
9	ISSUED FOR SPA	24-02-20	WAS
10	ISSUED FOR SPA	24-02-20	WAS


 255 Consumers Rd
 Suite 120
 Toronto ON M2J 1R4
 t 416.630.2255
 f 416.630.4782
 va3design.com

All drawings, specifications, notes, documents and design are the copyright property of VA3 DESIGN. Reproduction of this property in whole or in part is strictly prohibited without VA3 DESIGN's written permission.

The contractor has reviewed and taken responsibility for the design, documents and design are the copyright property of VA3 DESIGN. Reproduction of this property in whole or in part is strictly prohibited without VA3 DESIGN's written permission.

Richard Vukobratovic
 Designer
 24488
 43658

HAMOUNT INVESTMENTS
 project name: _____
 location: WASAGA, ONTARIO
 DUAL FRONTING TOWNHOUSES

project no: 16041
BUILDING 3
 BLOCK ELEVATIONS
 1/8" = 1'-0"
 DECEMBER 2023
 drawn by: S. BATHANSI
 checked by: _____
 16041-DF SPA BLOCKS

B3.2

BUILDING 3



22 TH-2E
ELEV. 'A' REV.

22 TH-2E
ELEV. 'A' REV.

21 TH-1
ELEV. 'A' MOD.

20 TH-2 MOD.
ELEV. 'A'

19 TH-3
ELEV. 'A' MOD REV.

18 TH-3
ELEV. 'A'

17 TH-1
ELEV. 'A' REV.

16 TH-2E
ELEV. 'A'

TOP OF PLATE
TOP OF WINDOW
6'-10"
6'-11"
FIN. SECOND FLOOR
TOP OF WINDOW/TRANSOM
TOP OF DOOR
6'-10"
6'-11"
FIN. GROUND FLOOR
TOP OF SLAB
4'-11"
FIN. GRADE

RIGHT SIDE ELEVATION

REAR ELEVATION



16 TH-2E
ELEV. 'A'

16 TH-2E
ELEV. 'A'

17 TH-1
ELEV. 'A' REV.

18 TH-3
ELEV. 'A'

19 TH-3
ELEV. 'A' MOD REV.

20 TH-2
ELEV. 'A'

21 TH-1
ELEV. 'A' MOD.

22 TH-2E
ELEV. 'A' REV.

TOP OF PLATE
TOP OF WINDOW
6'-10"
6'-11"
FIN. SECOND FLOOR
TOP OF WINDOW/TRANSOM
TOP OF DOOR
6'-10"
6'-11"
FIN. GROUND FLOOR
TOP OF SLAB
4'-11"
FIN. GRADE

LEFT SIDE ELEVATION

FRONT ELEVATION

1	ISSUED FOR SPA	24-06-07	WAS
2	ISSUED FOR SPA	24-02-20	WAS
3	DESCRIPTION	DATE	BY


 255 Consumers Rd
 Suite 120
 Toronto ON M2J 1R4
 t 416.630.2255
 f 416.630.4782
 v&bdesign.com

All drawings, specifications, notes, documents and design are the copyright property of V&B DESIGN. Reproduction of this property in whole or in part is strictly prohibited without V&B DESIGN's written permission.

The contractor has reviewed and taken responsibility for the design, documents and design are the copyright property of V&B DESIGN. Reproduction of this property in whole or in part is strictly prohibited without V&B DESIGN's written permission.

Richard Vuk
 V&B DESIGN INC. 42358

HAMOUNT INVESTMENTS

project name: _____
 location: WASAGA, ONTARIO
 STANDARD TOWNHOUSES

project no: 16041
BUILDING 4
 BLOCK ELEVATIONS
 DECEMBER 2023 1/8" = 1'-0"
 drawn by: S. BATTAGLINI
 checked by: _____
 16041-TH SPA BLOCKS

B4.3

BUILDING 4



29 TH-2 END
ELEV. 'B' REV.

29 TH-2 END
ELEV. 'B' REV.

28 TH-3
ELEV. 'B' MOD.

27 TH-1
ELEV. 'B'

26 TH-2
ELEV. 'B' REV.

25 TH-2
ELEV. 'B'

24 TH-1
ELEV. 'B' REV.

23 TH-2 END
ELEV. 'B'

TOP OF PLATE
TOP OF WINDOW
6'-10"
8'-1"
FIN. SECOND FLOOR
TOP OF WINDOW/TRANSOM
TOP OF DOOR
6'-10"
10'-1"
FIN. GROUND FLOOR
FIN. GRADE
TOP OF SLAB
4'-11"

RIGHT SIDE ELEVATION

REAR ELEVATION



23 TH-2 END
ELEV. 'B'

23 TH-2 END
ELEV. 'B'

24 TH-1
ELEV. 'B' REV.

25 TH-2
ELEV. 'B'

26 TH-2
ELEV. 'B' REV.

27 TH-1
ELEV. 'B'

28 TH-3
ELEV. 'B' MOD.

29 TH-2 END
ELEV. 'B' REV.

PEAK OF ROOF
TOP OF WINDOW
6'-10"
8'-1"
FIN. SECOND FLOOR
TOP OF WINDOW/TRANSOM
TOP OF DOOR
6'-10"
10'-1"
FIN. GROUND FLOOR
FIN. GRADE (182.65)
ESTABLISHED GRADE
TOP OF SLAB
4'-11"

LEFT SIDE ELEVATION

FRONT ELEVATION

10			
9			
8			
7			
6			
5			
4			
3			
2			
1			

VAD DESIGN
255 Consumers Rd
Suite 120
Toronto ON M2J 1R4
t 416.630.2255
f 416.630.4782
va3design.com

All drawings, specifications, notes, documents and design are the copyright property of VAD DESIGN. Reproduction of this property in whole or in part is strictly prohibited without VAD DESIGN's written permission.

Richard Vink 24488
VAD DESIGN INC. 42658

HAMOUNT INVESTMENTS

project name: WASAGA, ONTARIO
project no: 16041

STANDARD TOWNHOUSES **BUILDING 5**

BLOCK ELEVATIONS
DECEMBER 2023 1/8" = 1'-0"
drawn by: S. BATTANI checked by: 16041-TH SPA BLOCKS

B5.3

BUILDING 5



35 TH-2C
ELEV. 'A' REV.

35 TH-2C
ELEV. 'A' REV.

34 TH-1
ELEV. 'A'

33 TH-2 MOD.
ELEV. 'A' REV.

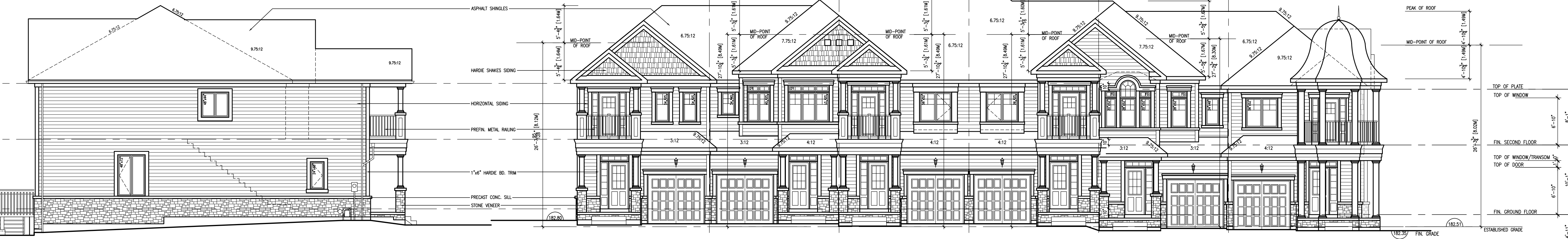
32 TH-2
ELEV. 'A'

31 TH-3
ELEV. 'A' MOD. REV.

30 TH-2 END
ELEV. 'A'

RIGHT SIDE ELEVATION

REAR ELEVATION



30 TH-2 END
ELEV. 'A'

30 TH-2 END
ELEV. 'A'

31 TH-3
ELEV. 'A' MOD. REV.

32 TH-2
ELEV. 'A'

33 TH-2
ELEV. 'A' REV.

34 TH-1
ELEV. 'A'

35 TH-2C
ELEV. 'A' REV.

LEFT SIDE ELEVATION

FRONT ELEVATION

1	ISSUED FOR SPA	24-06-07	WAS
2	ISSUED FOR SPA	24-02-20	WAS
3	DESCRIPTION	DATE	BY

VAD DESIGN

255 Consumers Rd
Suite 120
Toronto ON M2J 1R4
t 416.630.2255
f 416.630.4782
vadesign.com

Richard Vuk *R. Vuk* 24488
owner signature information
VAD Design Inc. 42658

HAMOUNT INVESTMENTS

project name
municipality
WASAGA, ONTARIO
standard townhouses

project no.
16041

BUILDING 6

BLOCK ELEVATIONS
DECEMBER 2023
1/8" = 1'-0"

42658
B6.3

BUILDING 6