

Attachment 5- Shadow Study

SHADOW STUDY

WASAGA RIVERWOODS HOMES

RIVER ROAD WEST, WASAGA BEACH ON



AND ARCHITECTS INC.

3950 14th Ave., unit 609, Markham, ON L3R 0A9
T: 905-604-6960 E: info@andarchitects.ca
www.andarchitects.ca

SUMMARY:

Shadow study for a 5-storey condominium building prepared by AND Architects Inc.

The astronomic north is based on the Topographical survey of Block 196 Registered Plan 51 m-914 prepared by Nanfara & Ng Surveyors Inc. The source of base plan is also based on survey..

To reduce the shadow on adjacent building to the east, we located the building as close to the north lot line as possible. The fifth floor facing east is also stepped back to reduce shadow. The Shadow study shows the new building's shadow has very minor impact to the existing building to the east. Only a very small portion at north end of that building will receive shadow during evening time after 15:00 on March 21, after 17:00 on June 21, after 15:00 on September 21, after 14:00 on December 21. The majority of the building is free from the shadow of the proposed building most of the time during the day.



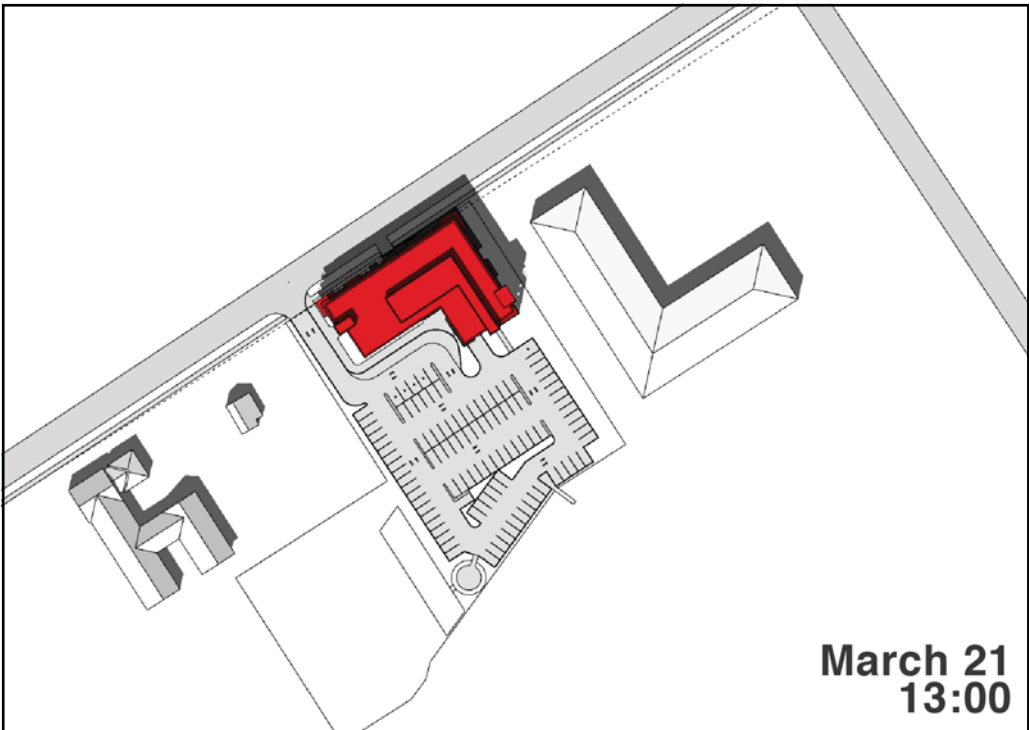
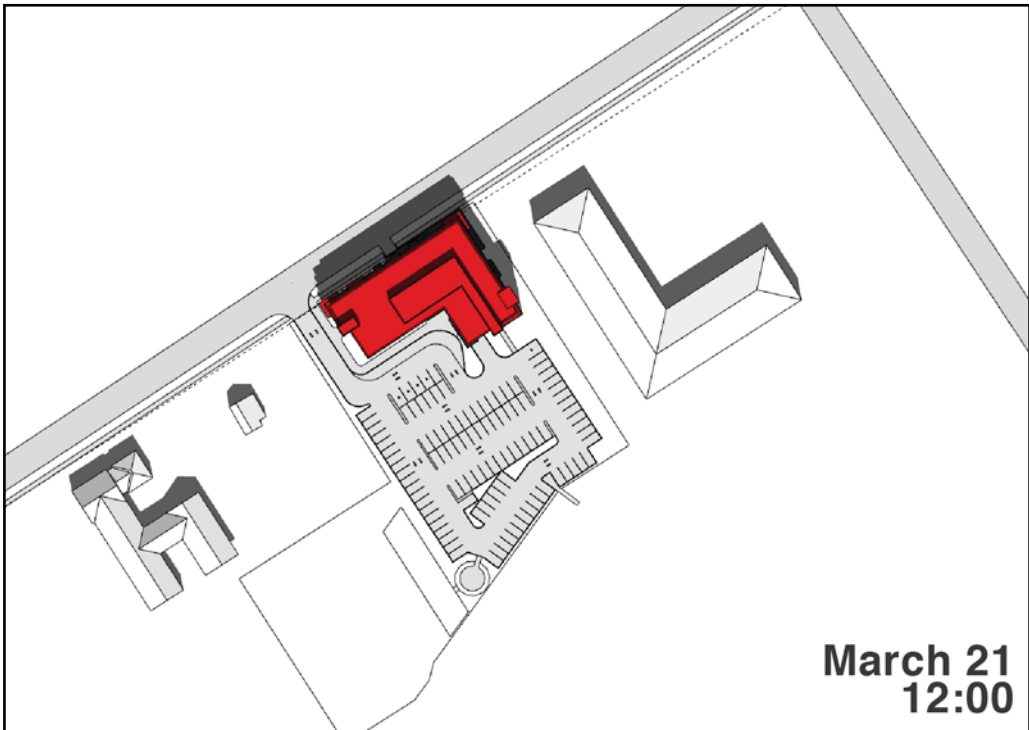
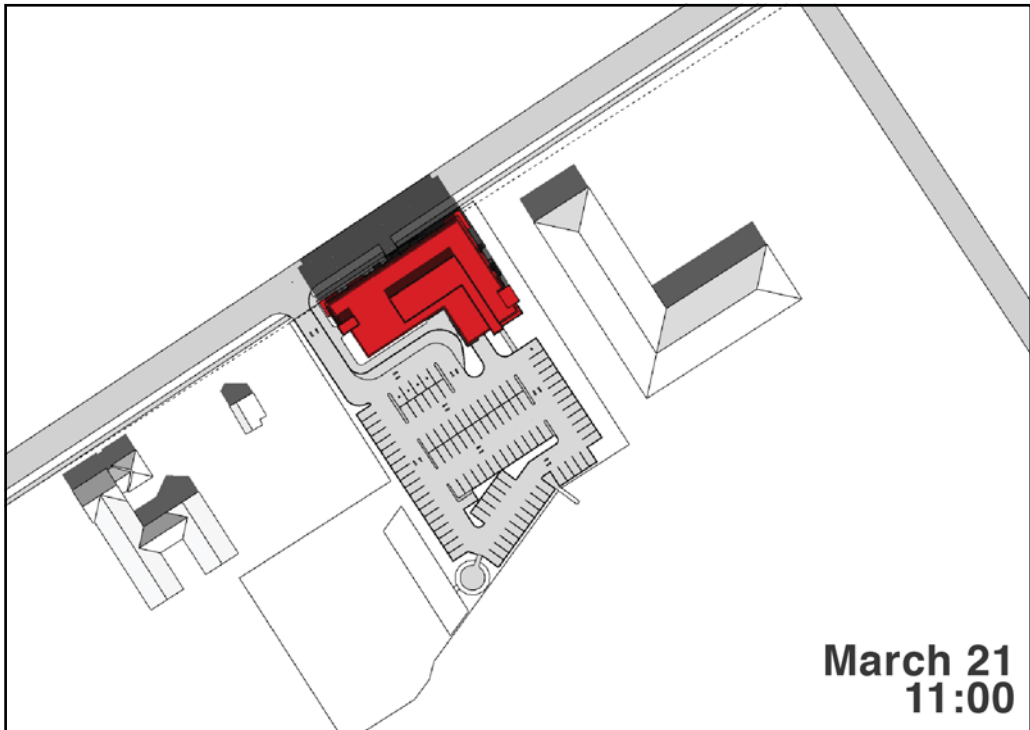
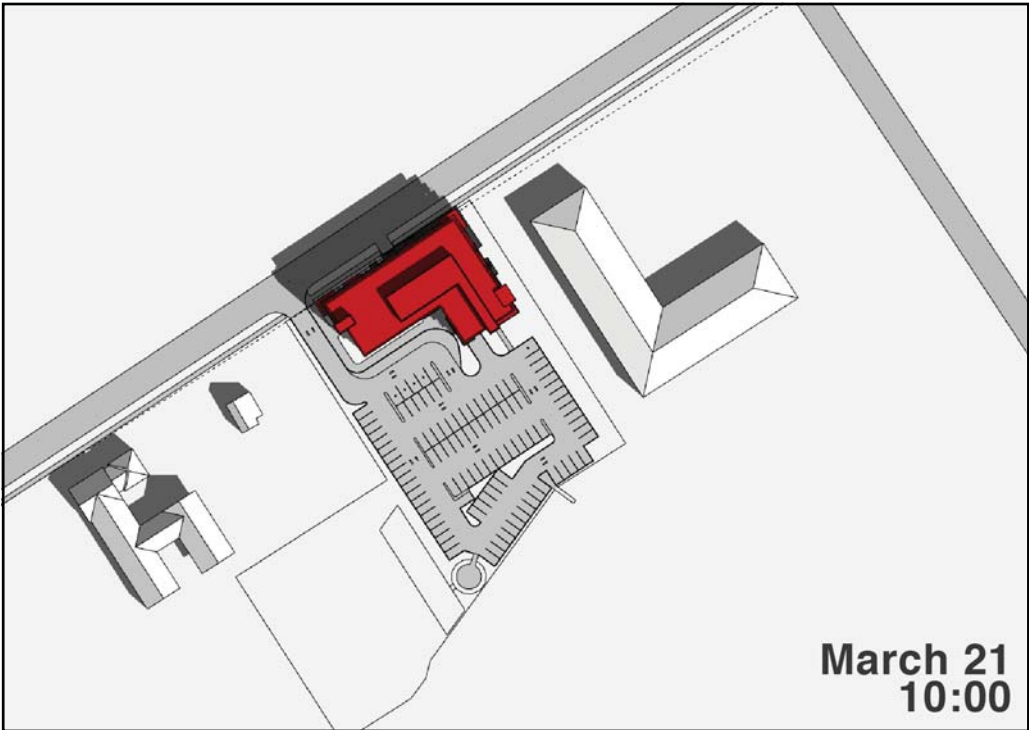
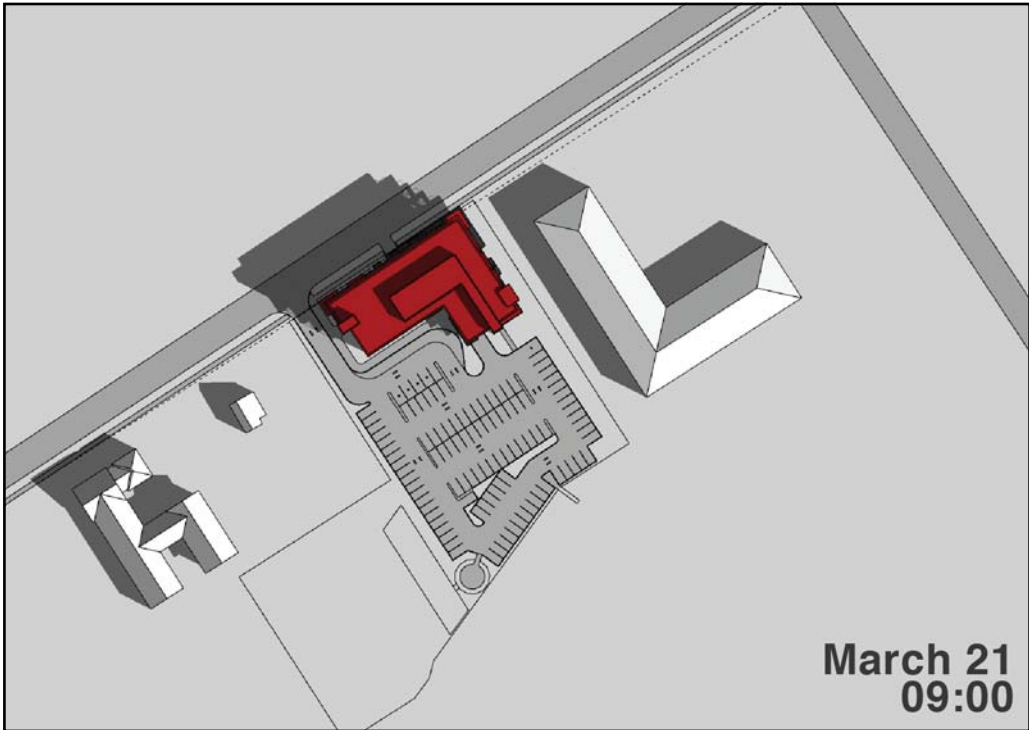
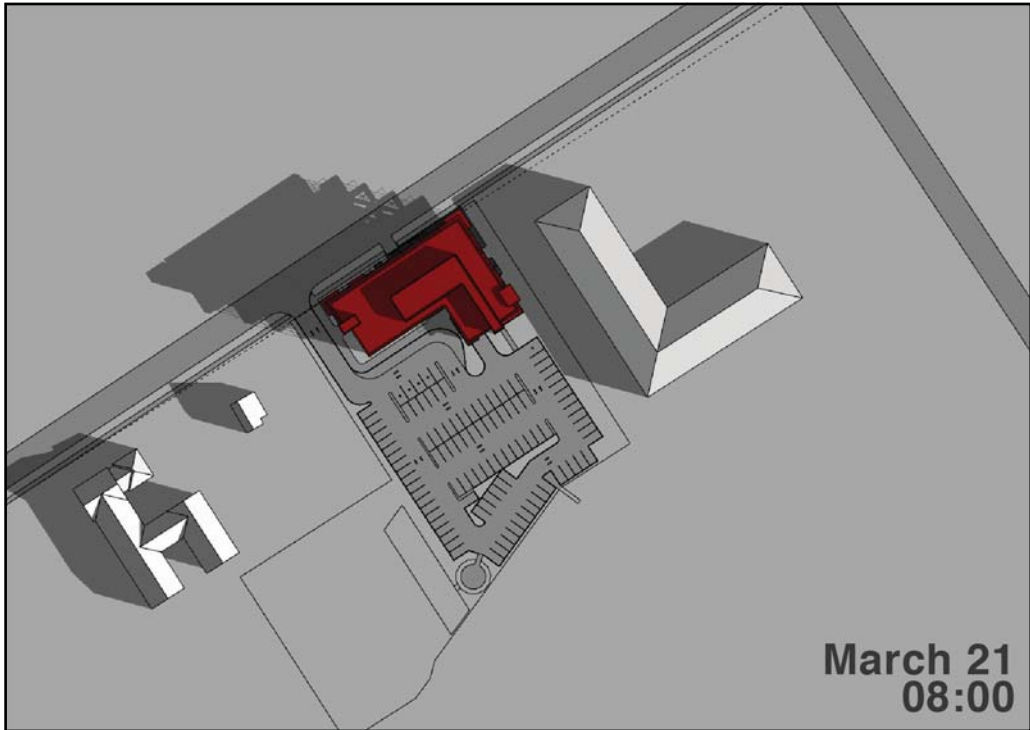
AND ARCHITECTS INC.

3950 14th Ave., unit 609, Markham, ON L3R 0A9
T: 905-604-6960 E: info@andarchitects.ca
www.andarchitects.ca

SITE: WASAGA BEACH,
ONTARIO

LATITUDE: 44.520535N
LONGITUDE: 80.008496W

MARCH 21



**RIVERWOODS HOMES
SHADOW STUDY**

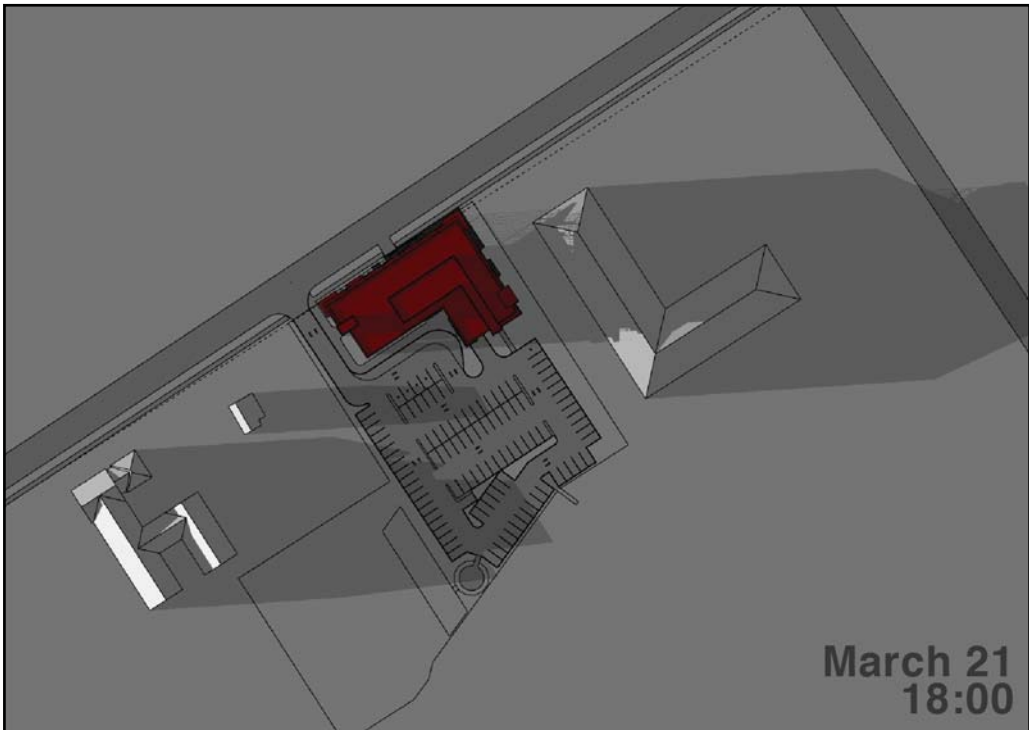
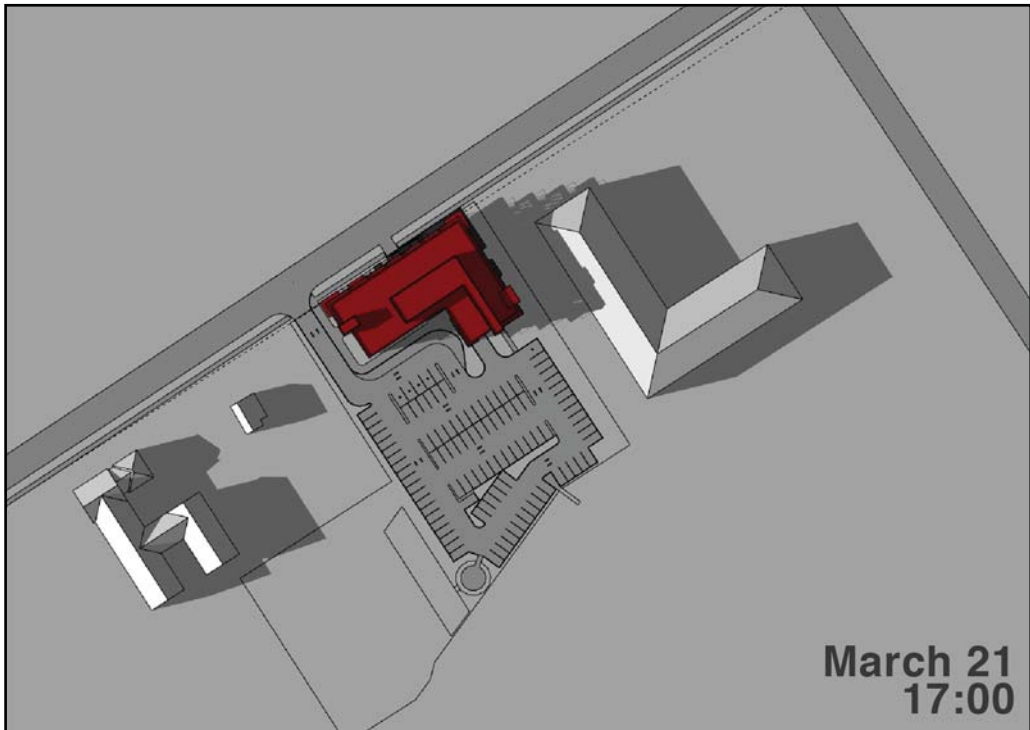
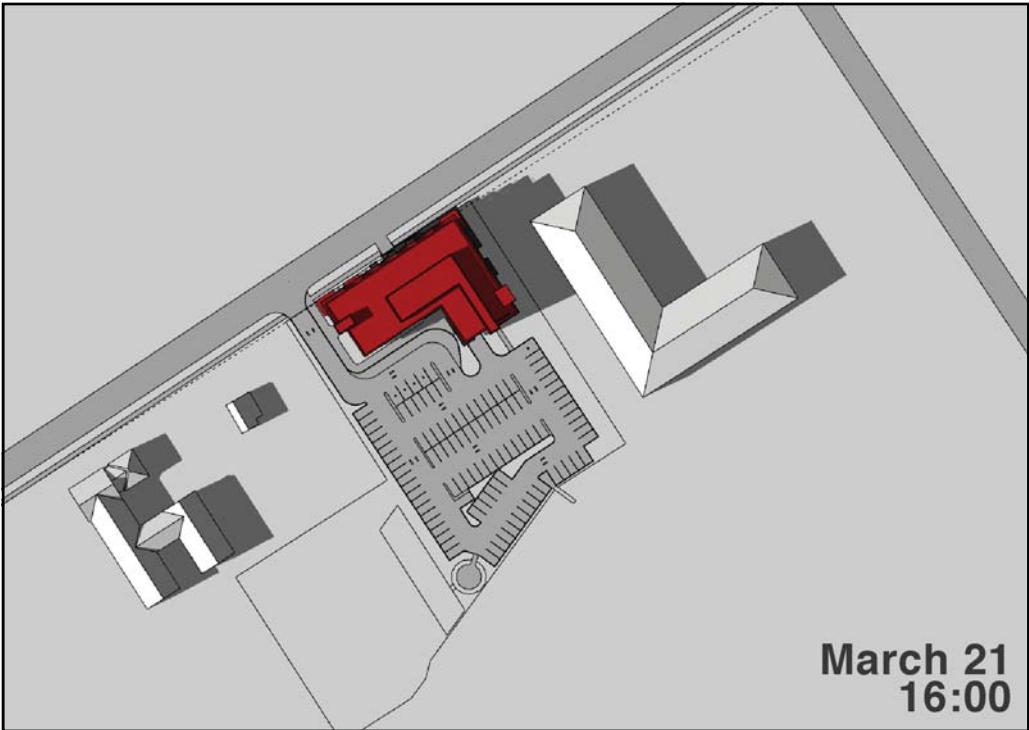
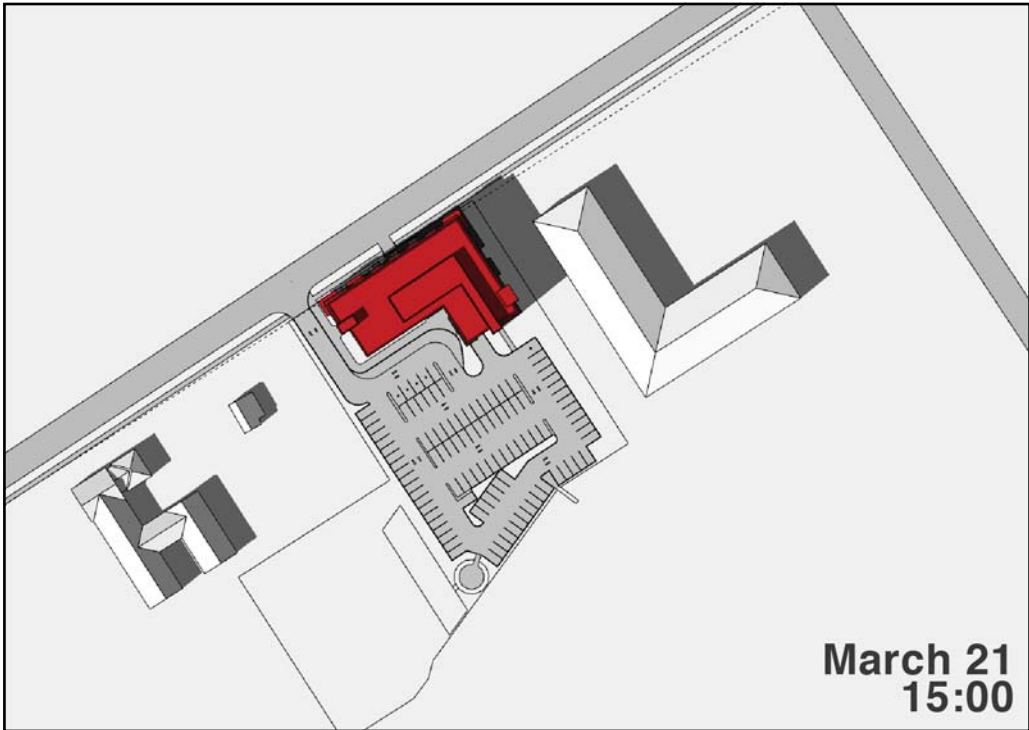
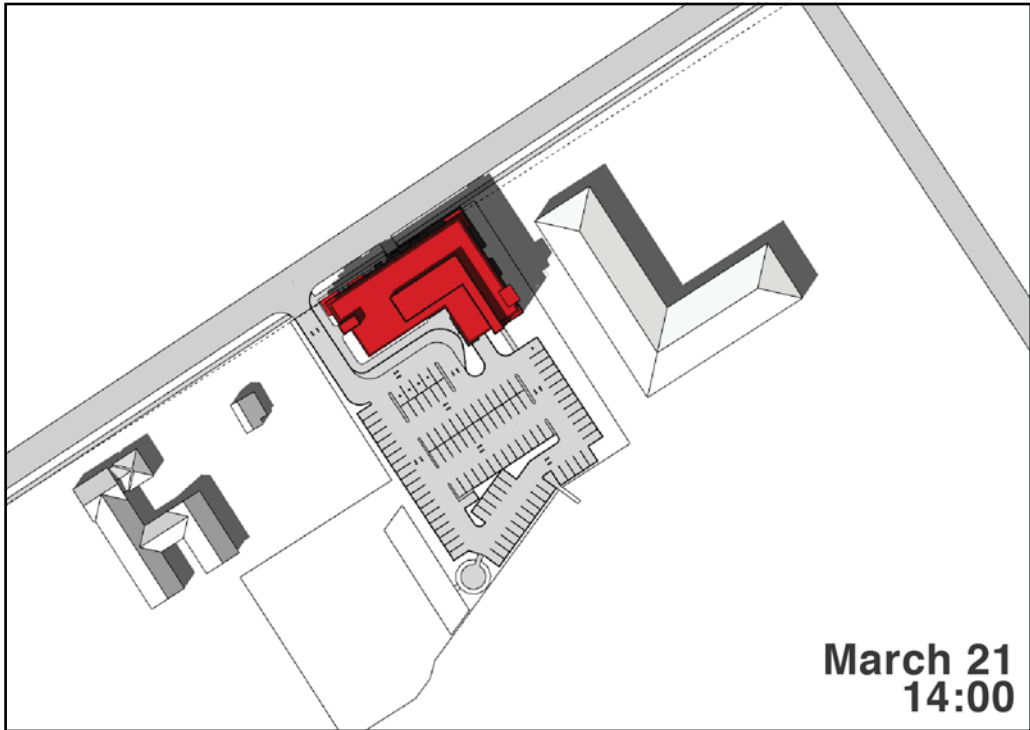


AND ARCHITECTS INC.
3950 14th Ave., unit 609, Markham, ON L3R 0A9
T: 905-604-6960 E: info@andarchitects.ca
www.andarchitects.ca

SITE: WASAGA BEACH,
ONTARIO

LATITUDE: 44.520535N
LONGITUDE: 80.008496W

MARCH 21



RIVERWOODS HOMES
SHADOW STUDY

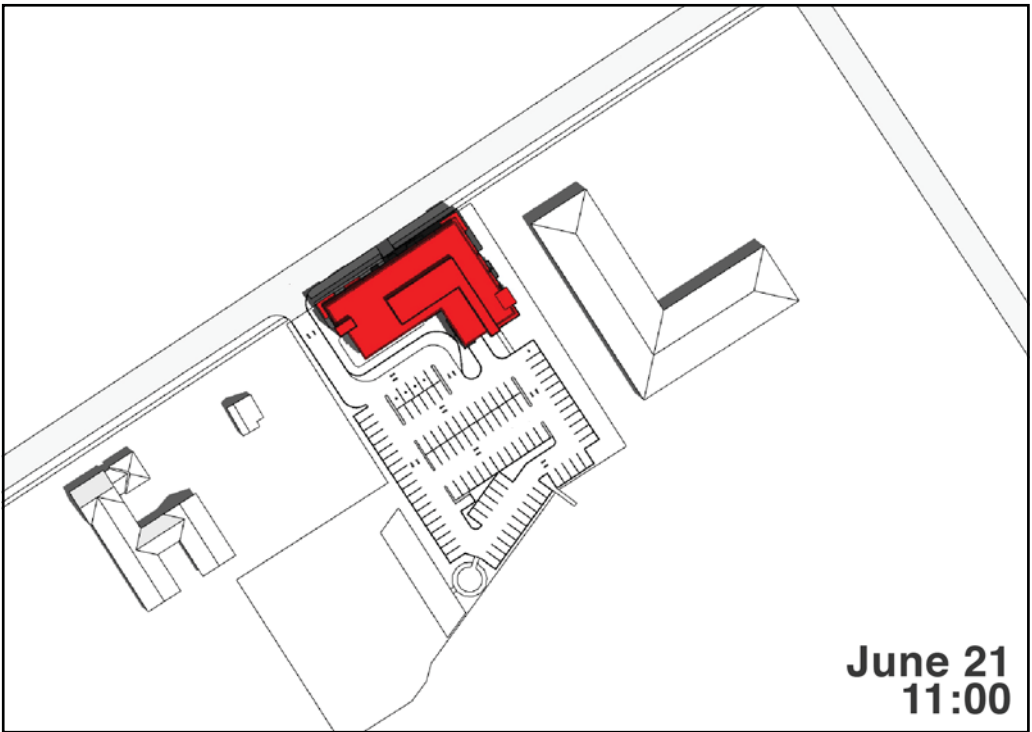
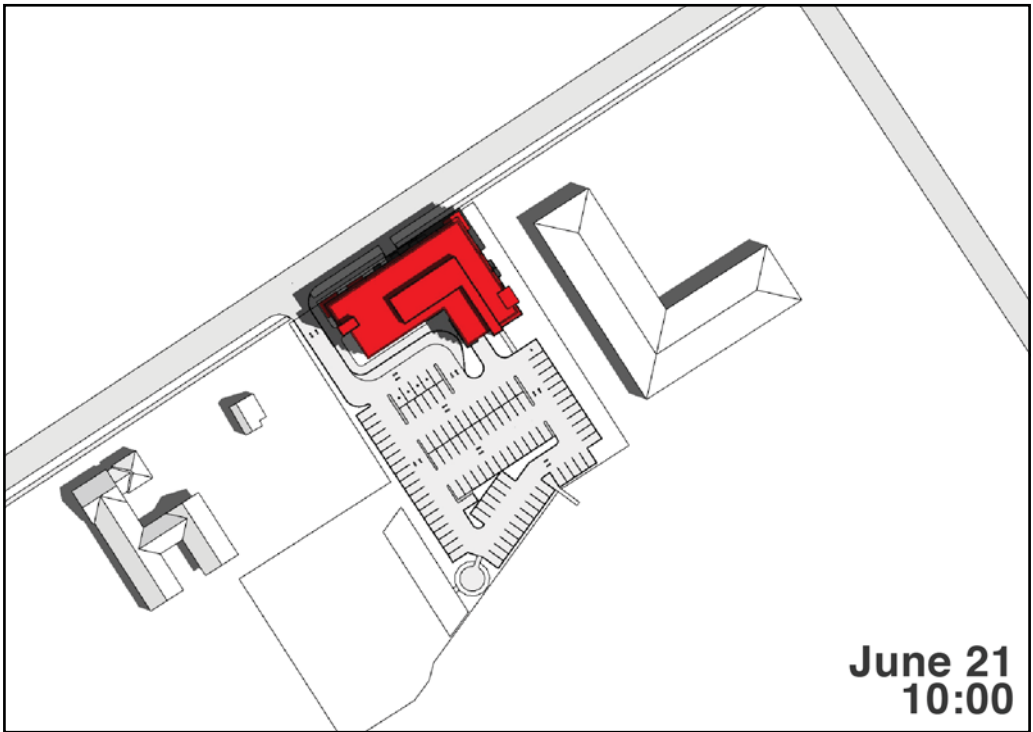
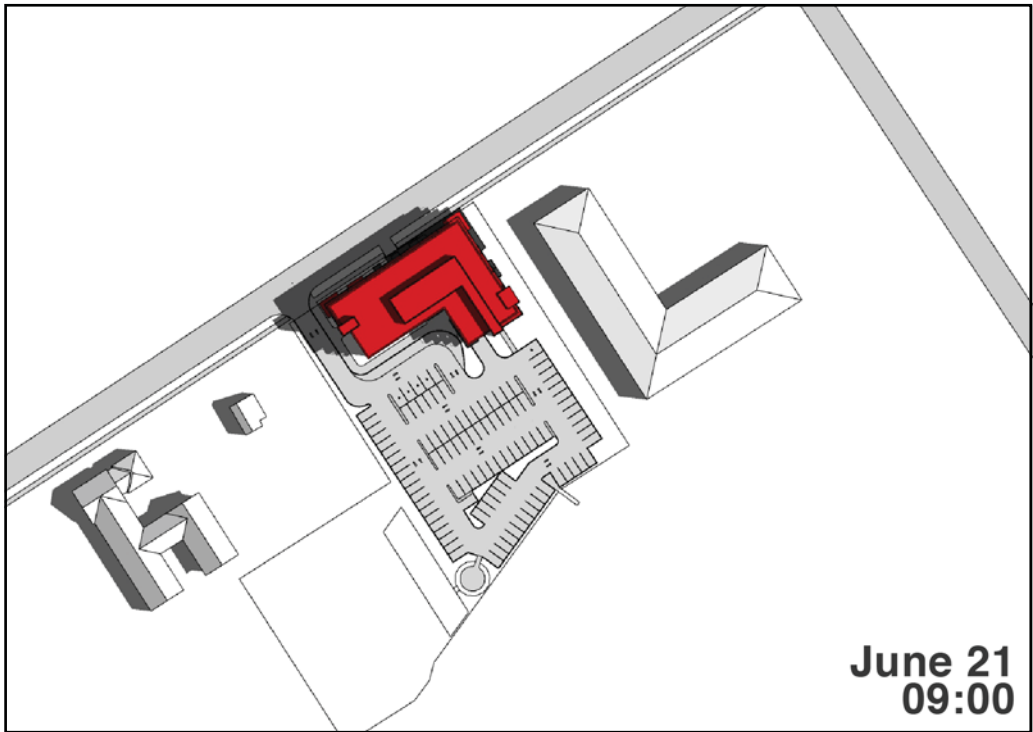
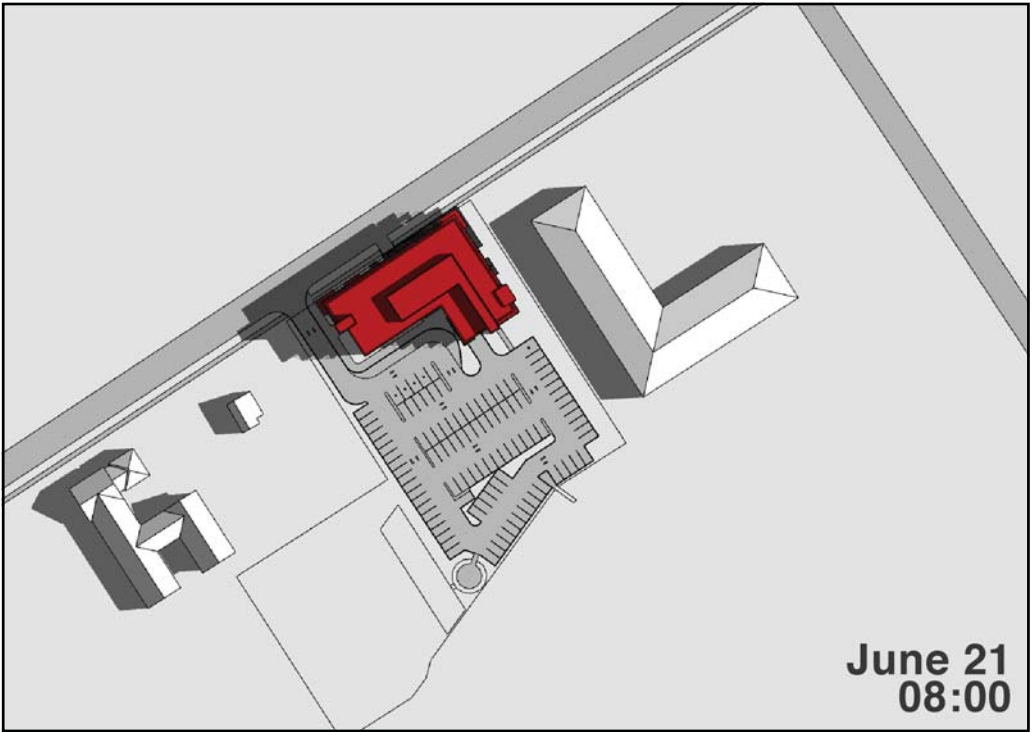
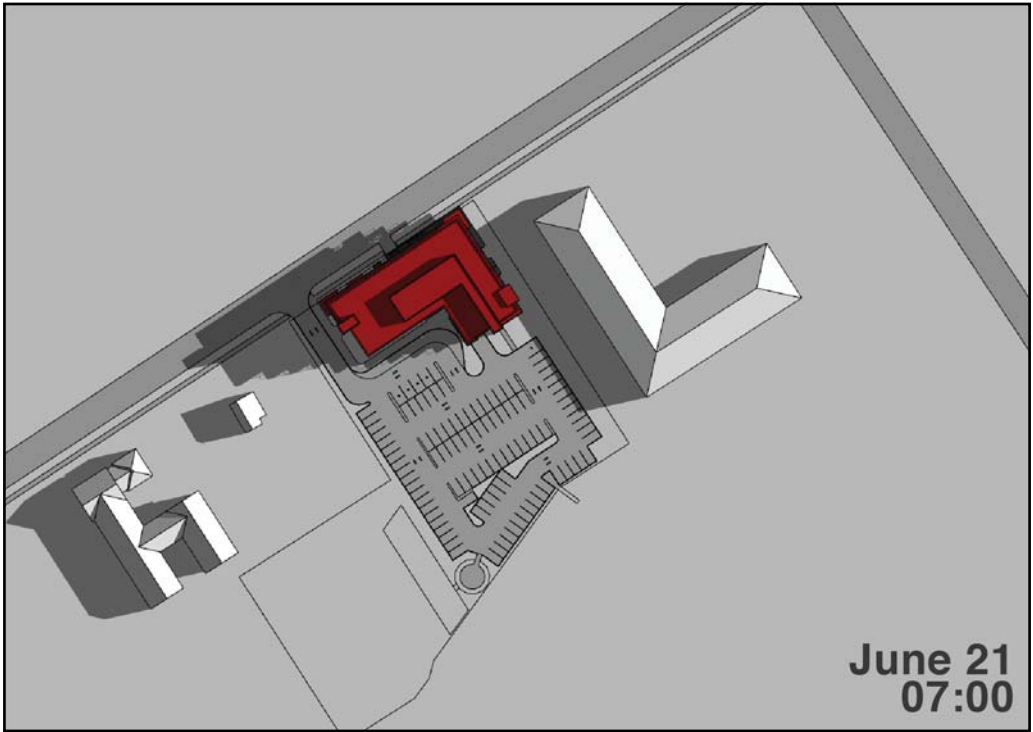
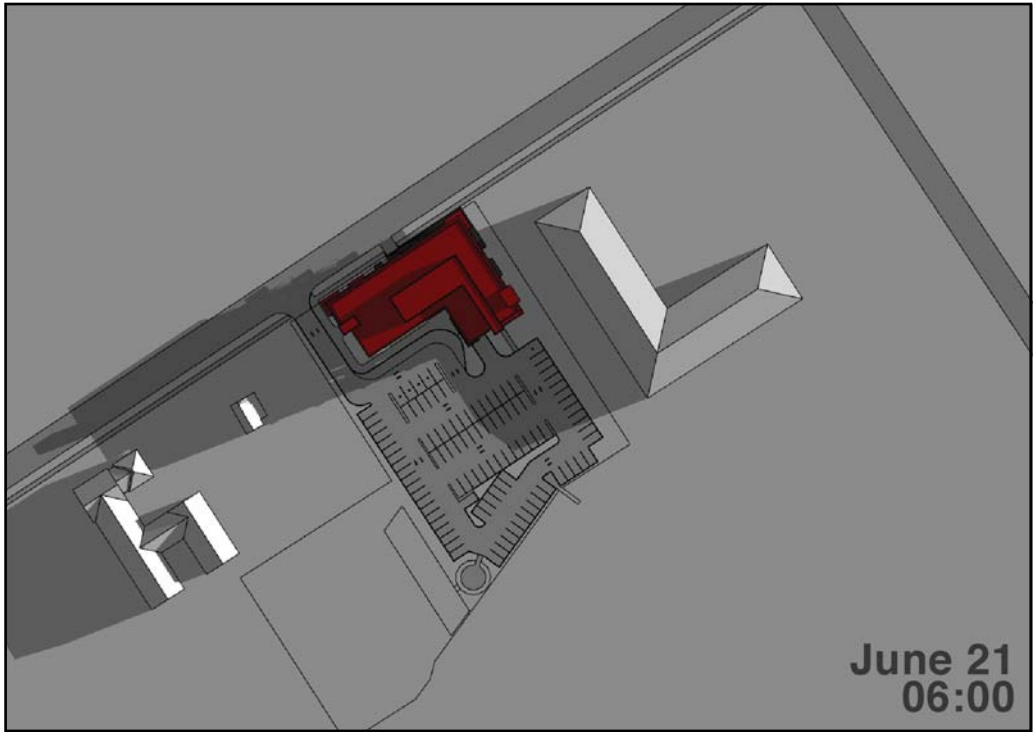


AND ARCHITECTS INC.
3950 14th Ave., unit 609, Markham, ON L3R 0A9
T: 905-604-6960 E: info@andarchitects.ca
www.andarchitects.ca

SITE: WASAGA BEACH,
ONTARIO

LATITUDE: 44.520535N
LONGITUDE: 80.008496W

JUNE 21



RIVERWOODS HOMES
SHADOW STUDY

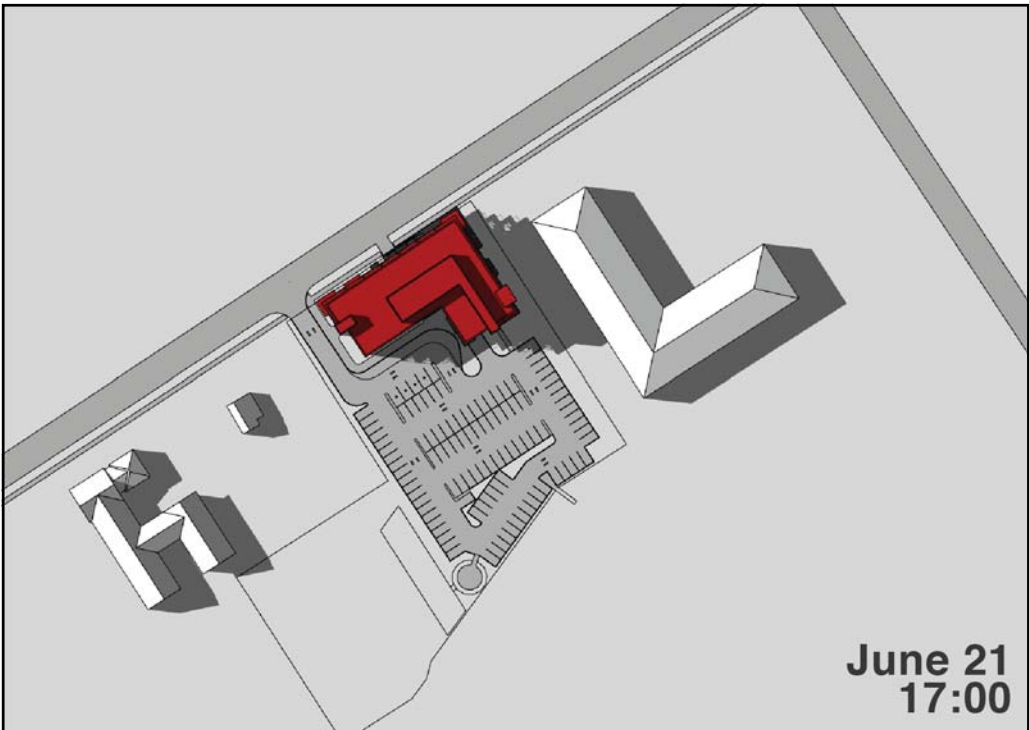
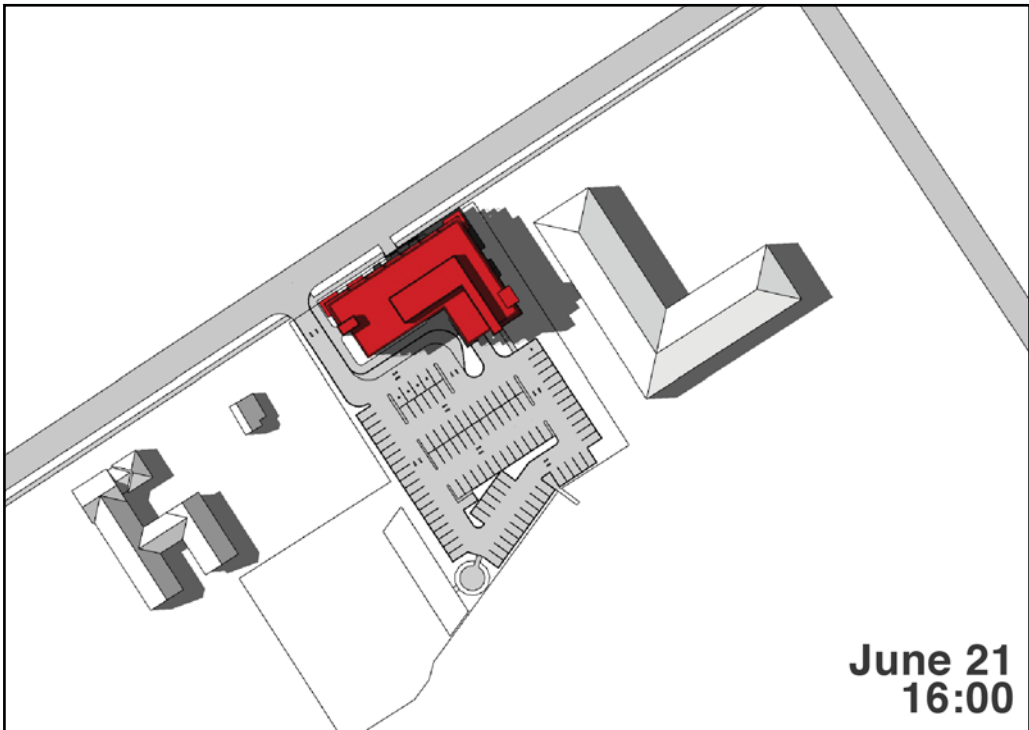
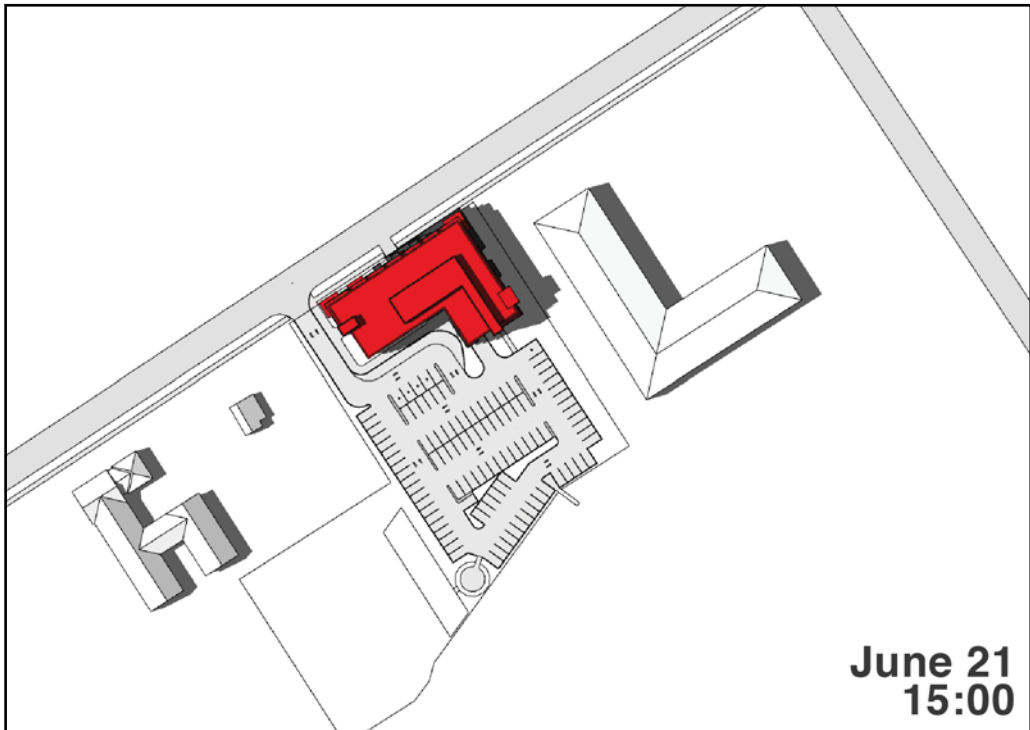
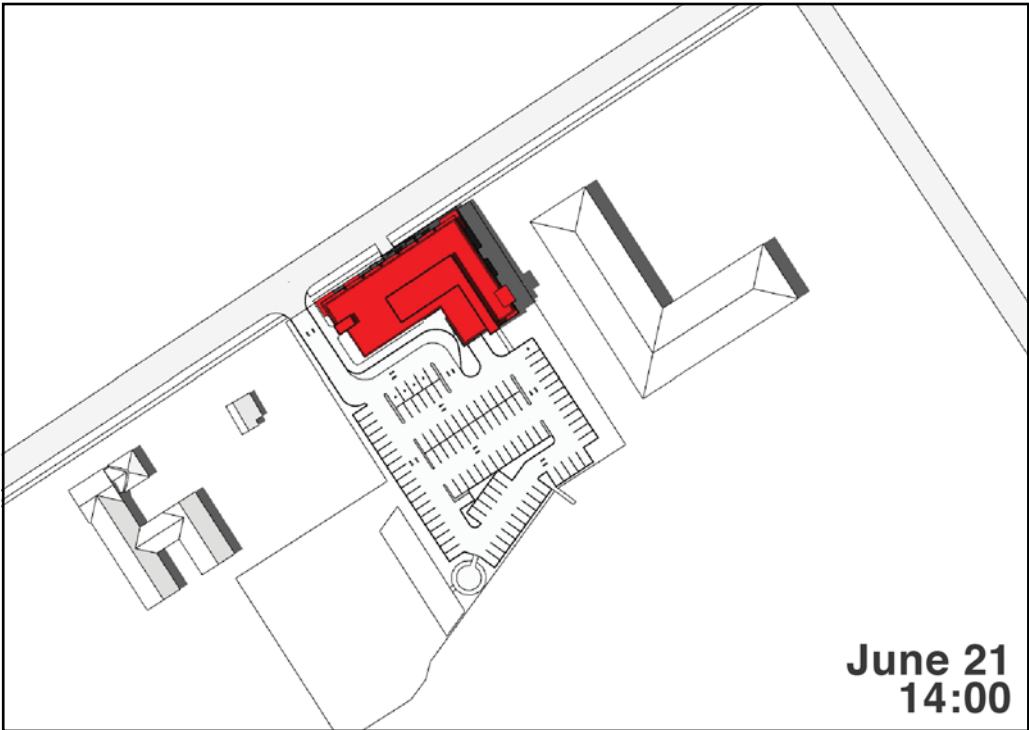
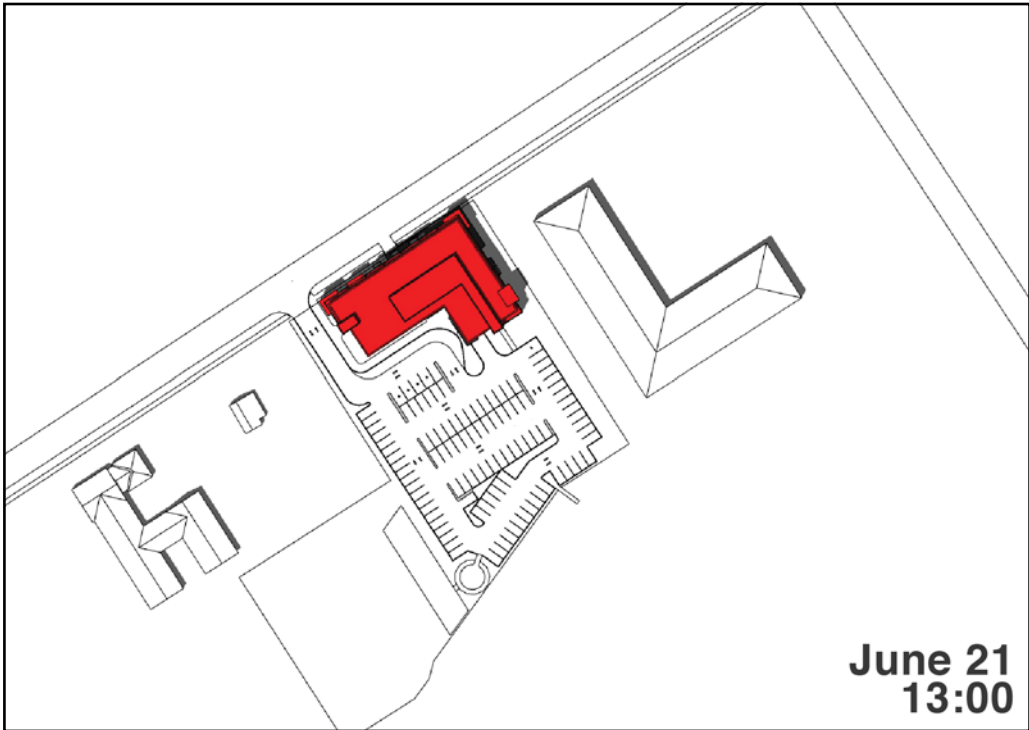
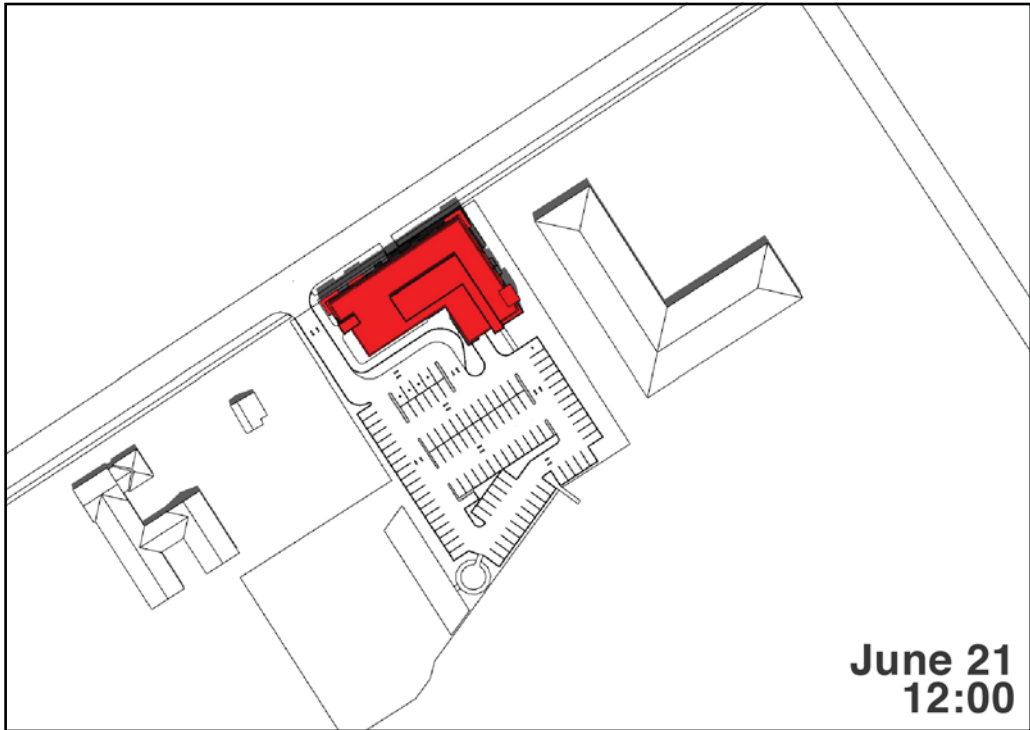


AND ARCHITECTS INC.
3950 14th Ave., unit 609, Markham, ON L3R 0A9
T: 905-604-6960 E: info@andarchitects.ca
www.andarchitects.ca

SITE: WASAGA BEACH,
ONTARIO

LATITUDE: 44.520535N
LONGITUDE: 80.008496W

JUNE 21



RIVERWOODS HOMES
SHADOW STUDY

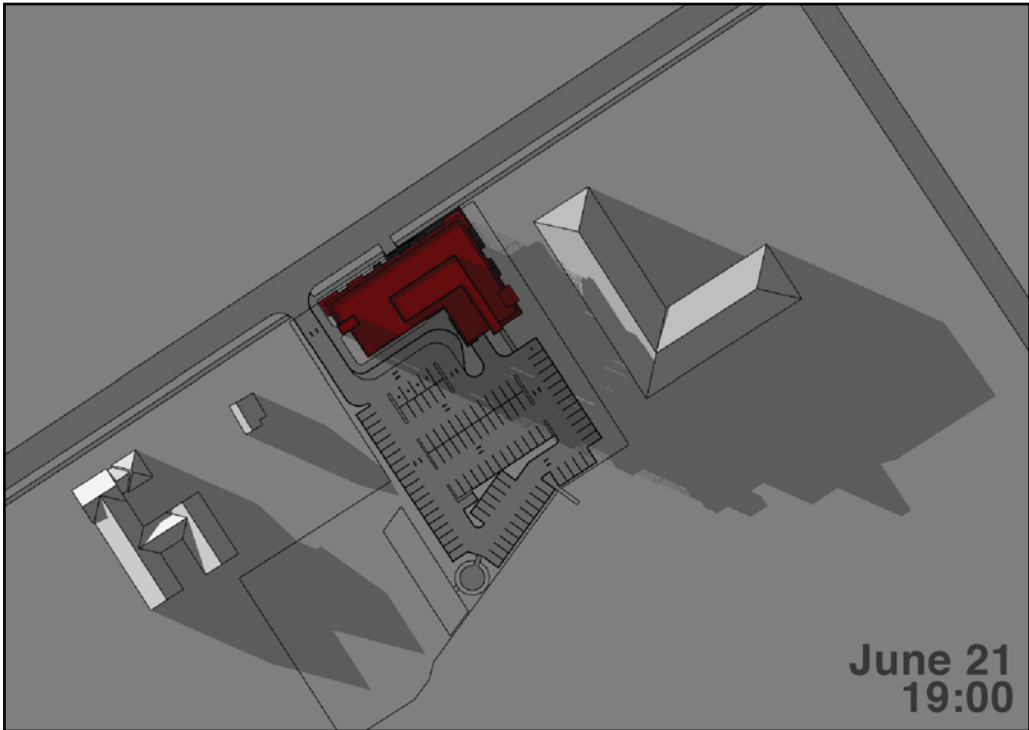
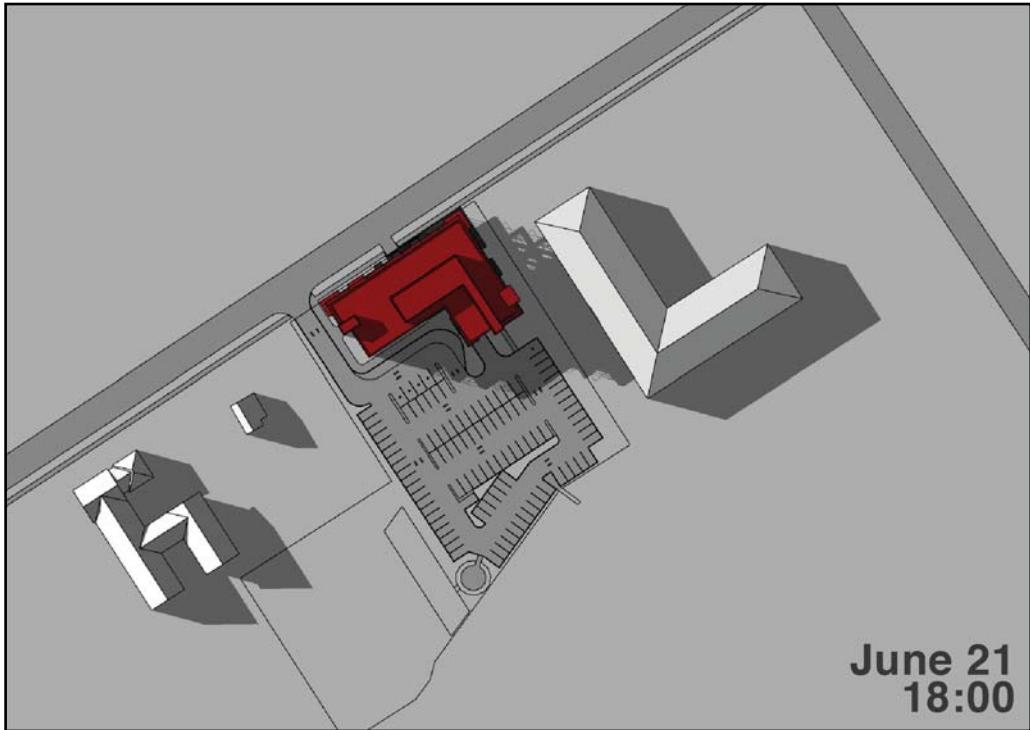


AND ARCHITECTS INC.
3950 14th Ave., unit 609, Markham, ON L3R 0A9
T: 905-604-6960 E: info@andarchitects.ca
www.andarchitects.ca

SITE: WASAGA BEACH,
ONTARIO

LATITUDE: 44.520535N
LONGITUDE: 80.008496W

JUNE 21



RIVERWOODS HOMES
SHADOW STUDY

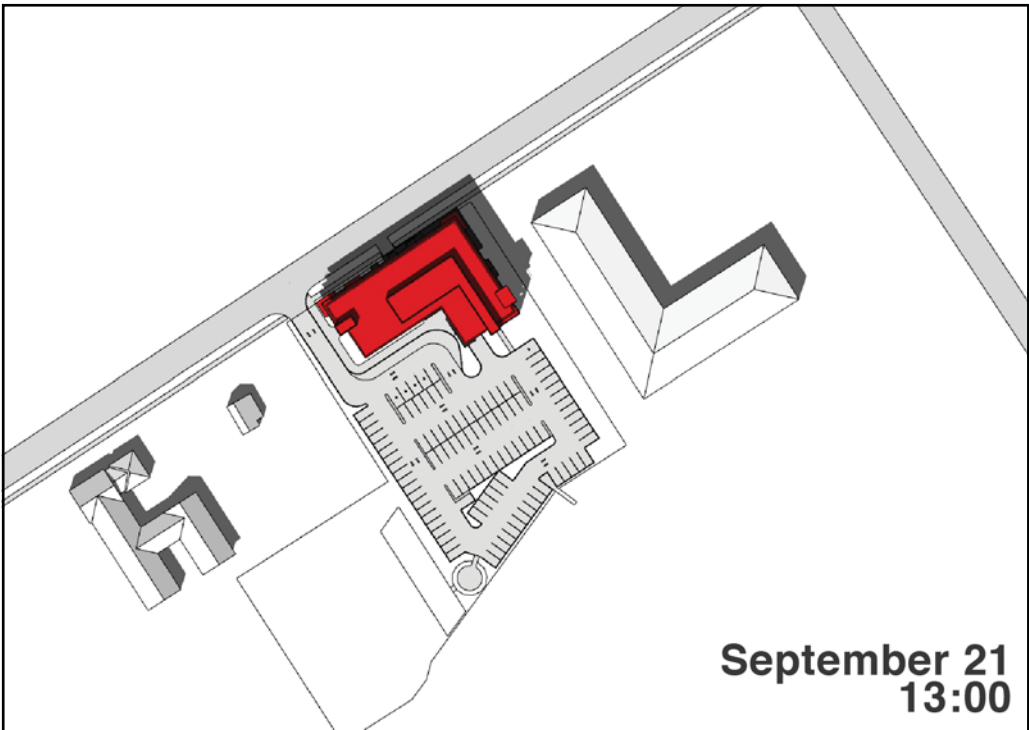
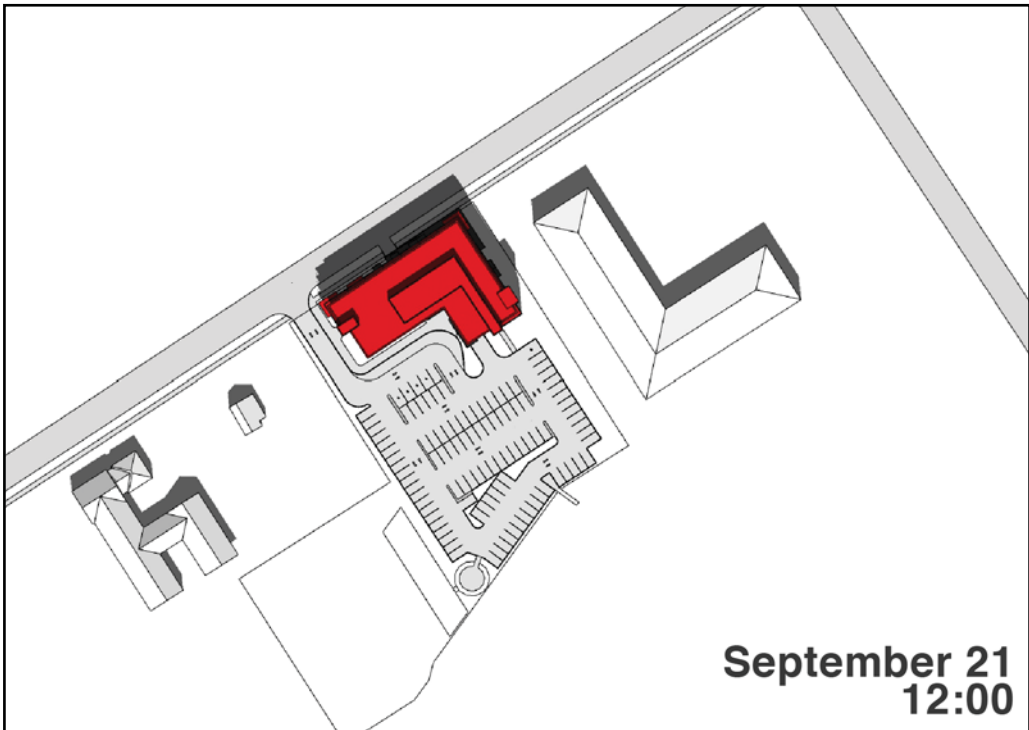
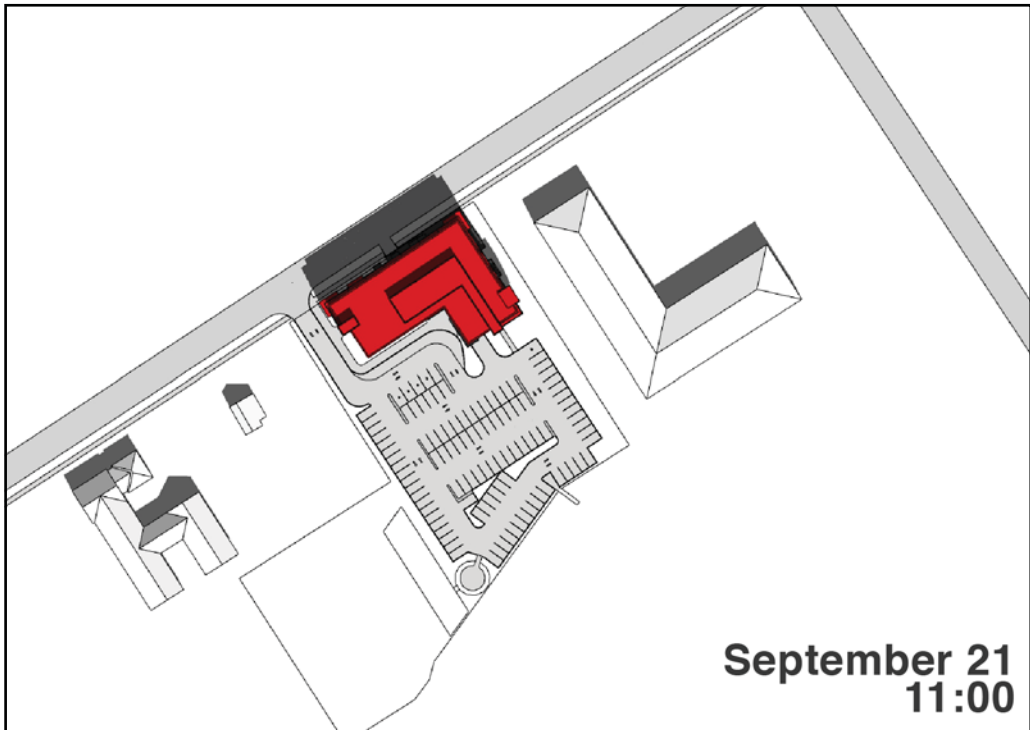
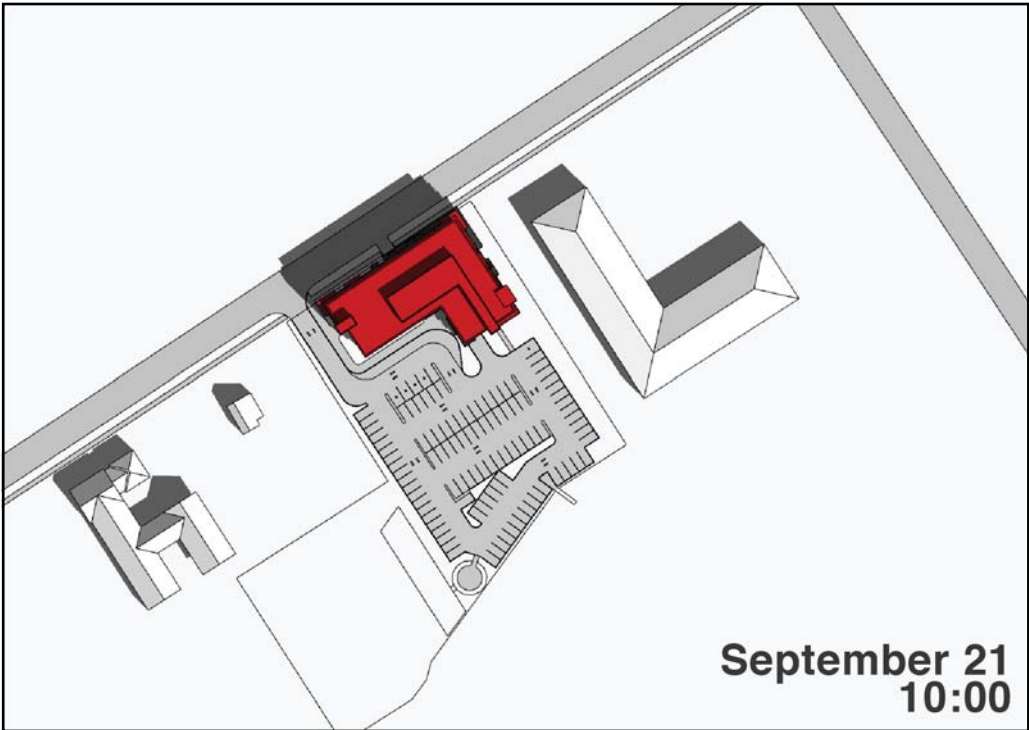
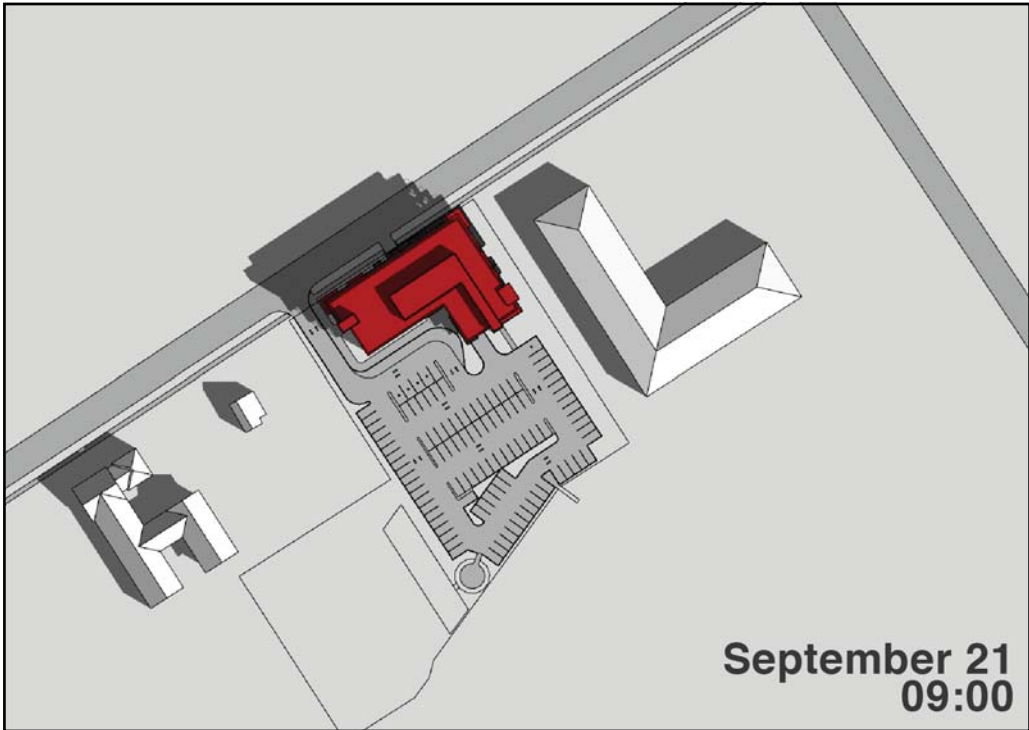
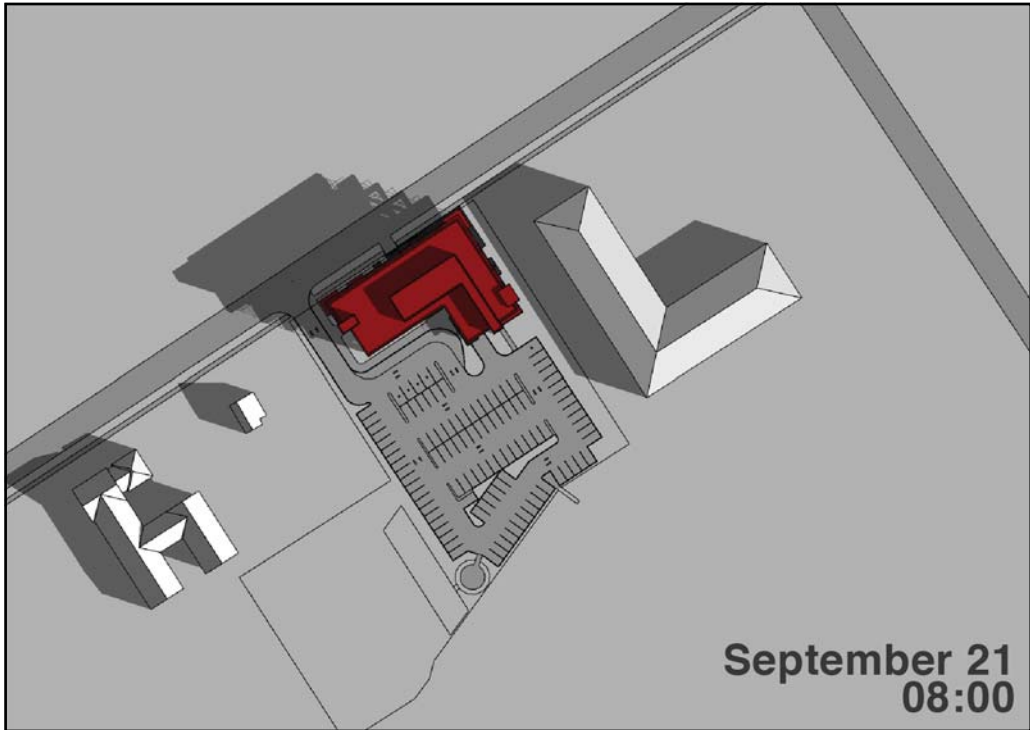


AND ARCHITECTS INC.
3950 14th Ave., unit 609, Markham, ON L3R 0A9
T: 905-604-6960 E: info@andarchitects.ca
www.andarchitects.ca

SITE: WASAGA BEACH,
ONTARIO

LATITUDE: 44.520535N
LONGITUDE: 80.008496W

SEPTEMBER 21



RIVERWOODS HOMES
SHADOW STUDY

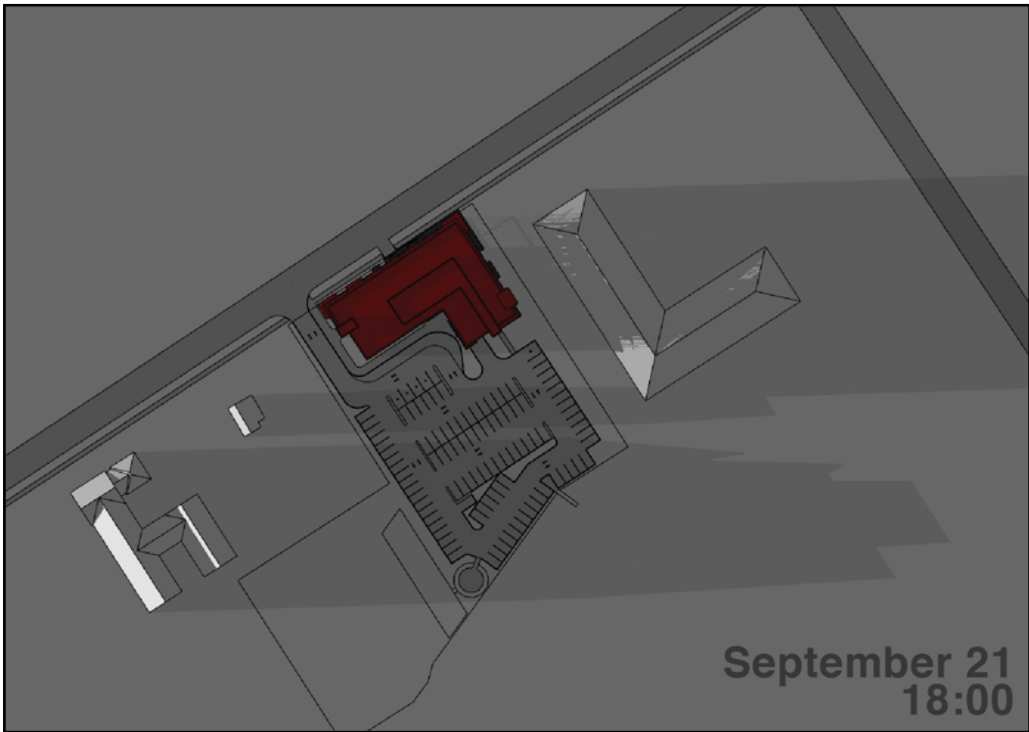
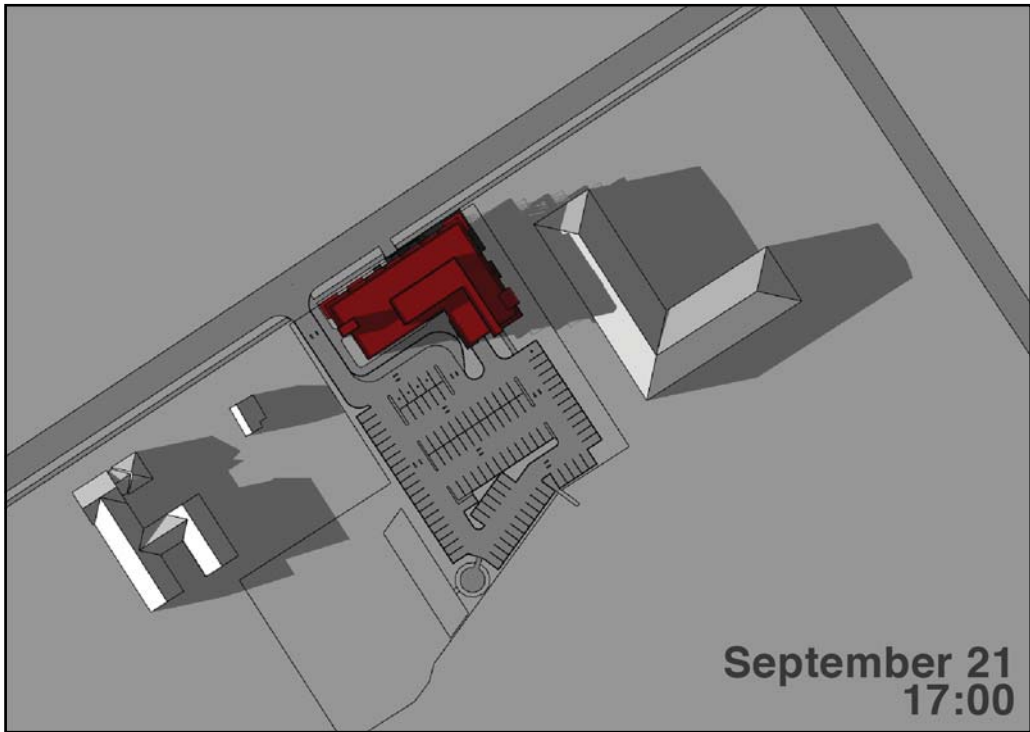
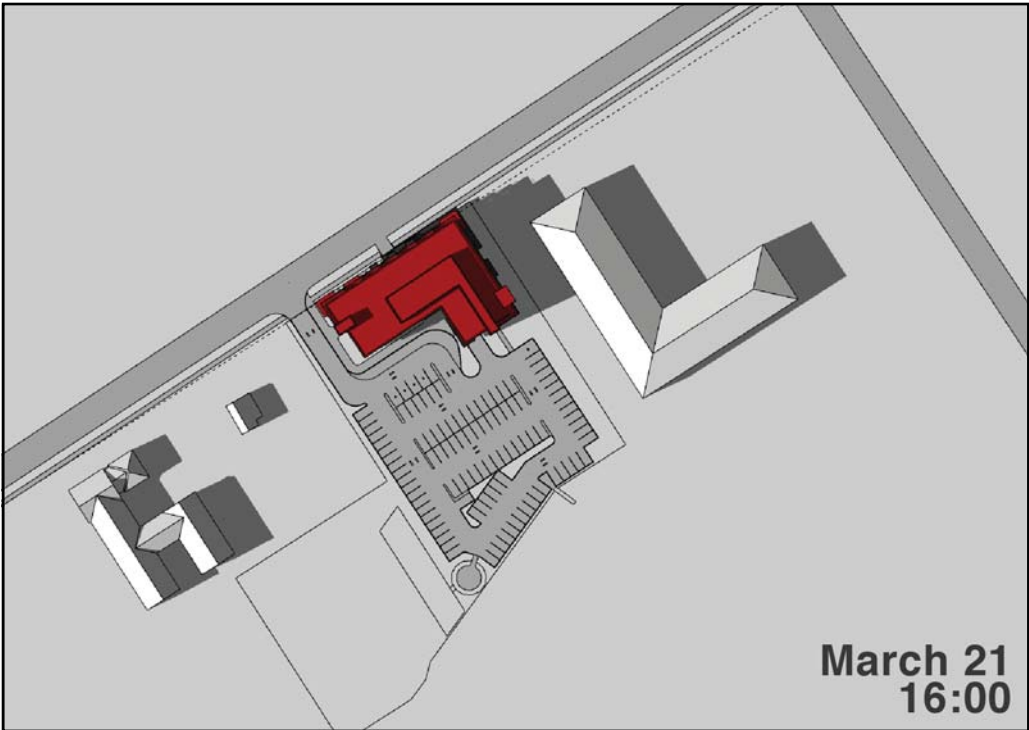
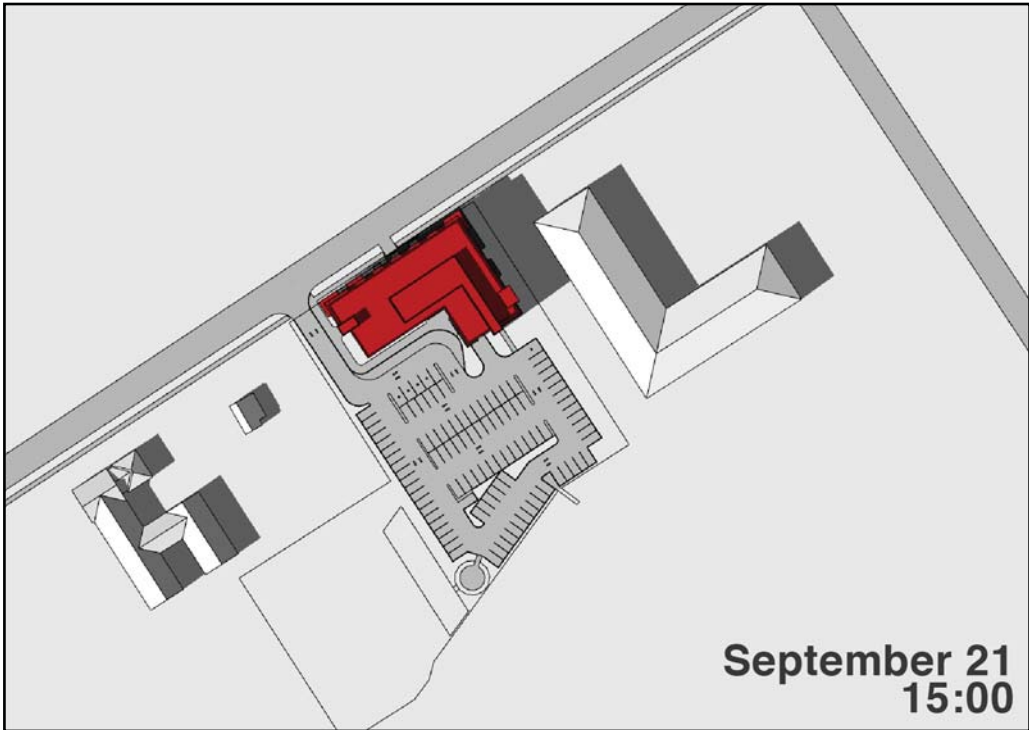
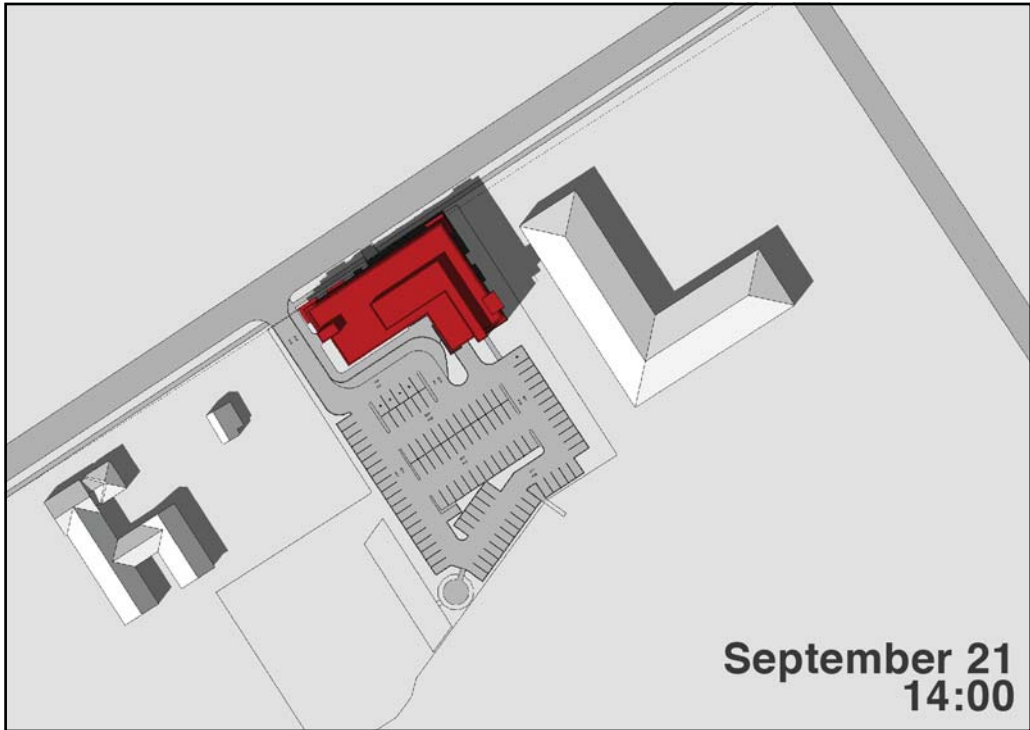


AND ARCHITECTS INC.
3950 14th Ave., unit 609, Markham, ON L3R 0A9
T: 905-604-6960 E: info@andarchitects.ca
www.andarchitects.ca

SITE: WASAGA BEACH,
ONTARIO

LATITUDE: 44.520535N
LONGITUDE: 80.008496W

SEPTEMBER 21



RIVERWOODS HOMES
SHADOW STUDY

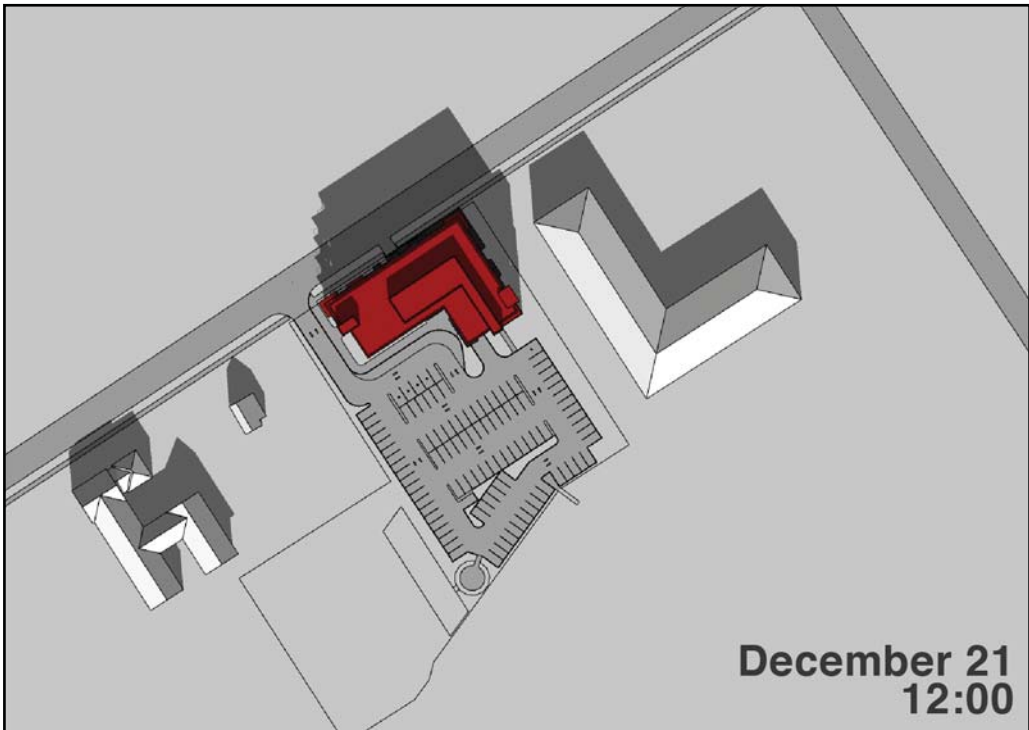
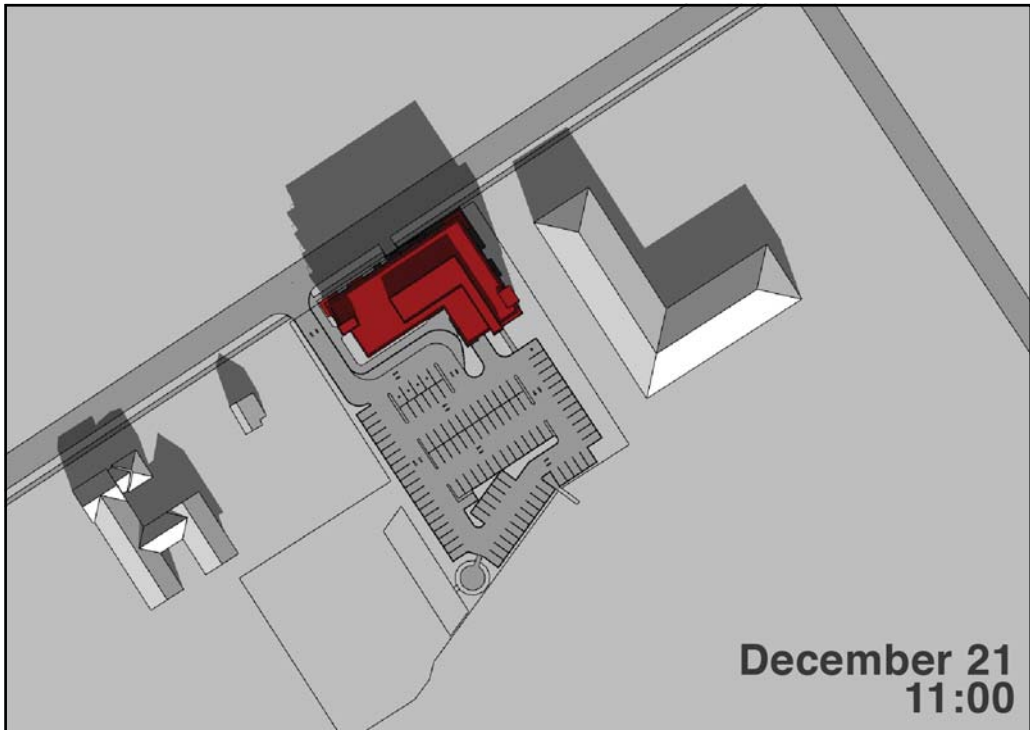
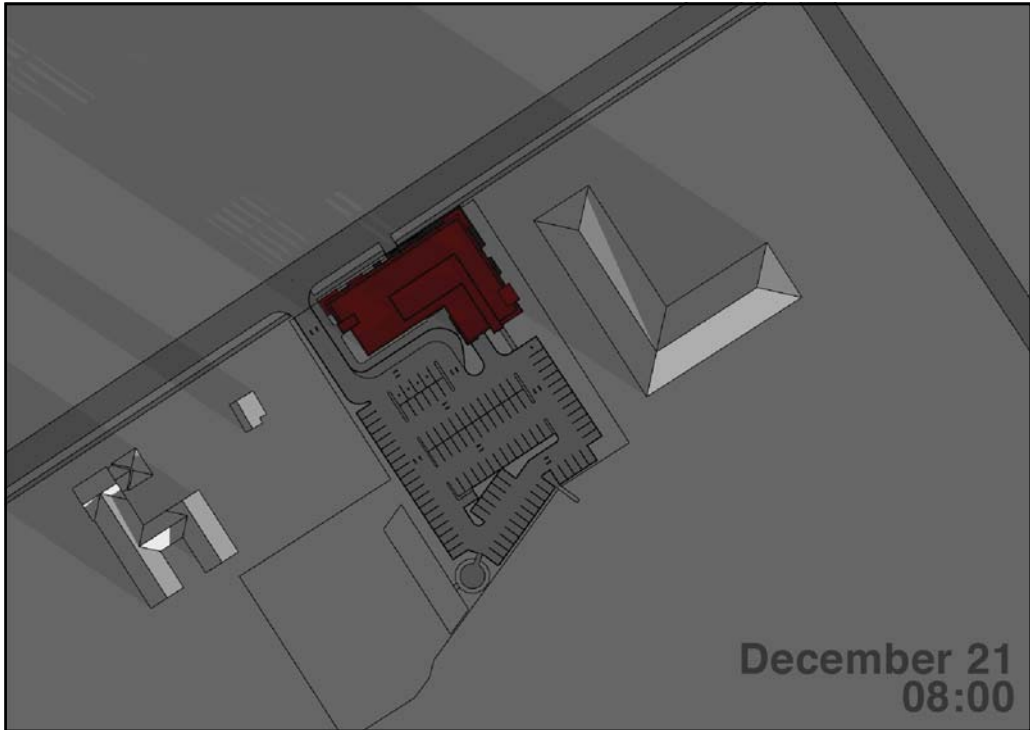


AND ARCHITECTS INC.
3950 14th Ave., unit 609, Markham, ON L3R 0A9
T: 905-604-6960 E: info@andarchitects.ca
www.andarchitects.ca

SITE: WASAGA BEACH,
ONTARIO

LATITUDE: 44.520535N
LONGITUDE: 80.008496W

DECEMBER 21



RIVERWOODS HOMES
SHADOW STUDY

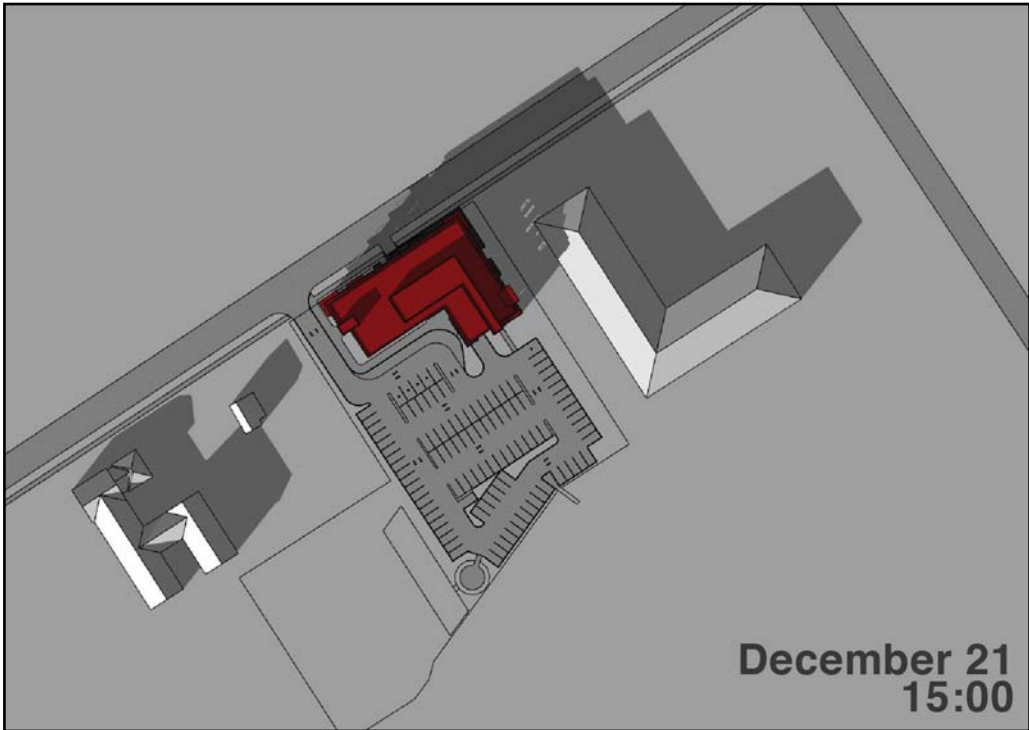
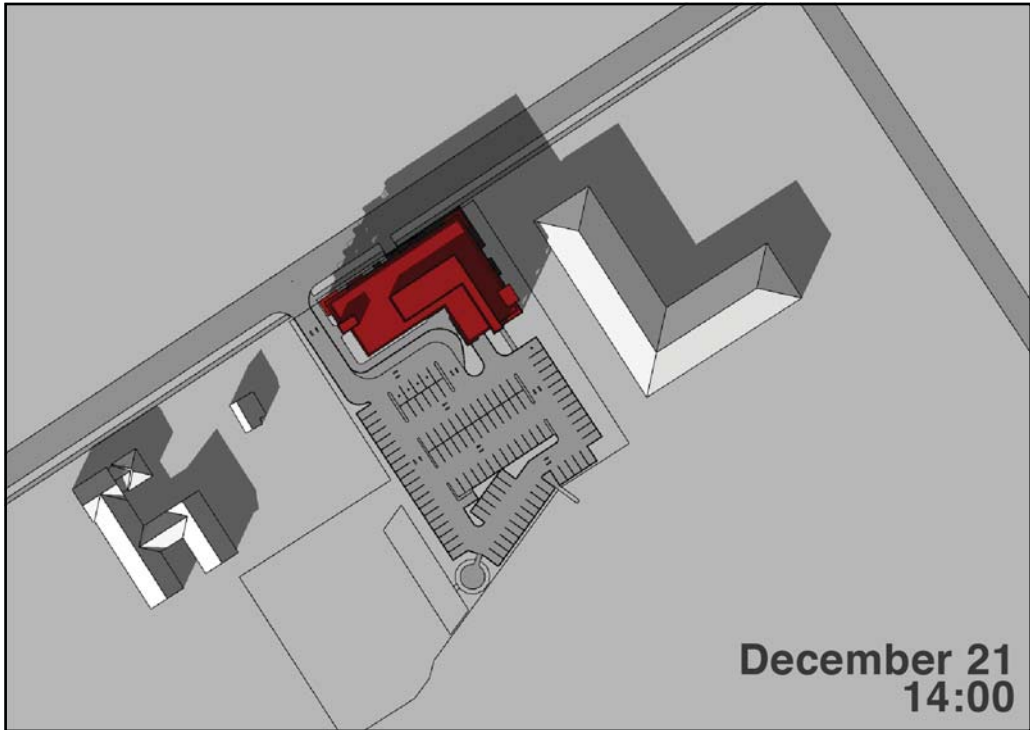


AND ARCHITECTS INC.
3950 14th Ave., unit 609, Markham, ON L3R 0A9
T: 905-604-6960 E: info@andarchitects.ca
www.andarchitects.ca

SITE: WASAGA BEACH,
ONTARIO

LATITUDE: 44.520535N
LONGITUDE: 80.008496W

DECEMBER 21



RIVERWOODS HOMES
SHADOW STUDY



AND ARCHITECTS INC.
3950 14th Ave., unit 609, Markham, ON L3R 0A9
T: 905-604-6960 E: info@andarchitects.ca
www.andarchitects.ca